

# Sony - LoopSign Deployment Guide

There are two ways to deploy LoopSign to your Sony screen and that is either to use an USB stick with defined URL to launch or utilizing the built in URL launcher.

The recommended approach will be to use the built in URL launcher however in larger deployments it may make more sense to use the USB stick approach.

Be aware that with the USB stick approach anyone with a Sony remote control can exit the play mode and change the screen to show something else. So, this approach may be risky to use in public places.

## Content

1.	General settings.....	2
2.	URL launch from USB stick .....	2
2.1	Timer settings.....	2
2.2	Prepare USB stick .....	2
3.	Sony Android 8/9/10 .....	4
3.1	Set Automatic Schedule on/off .....	4
3.2	Internal Web Browser configuration.....	4

## 1. General settings

Initially you must make sure your screen is internet connected and have basic configurations set. It is vital for LoopSign functionality that correct time zone and time/date is set. Please refer to your operating manual.

### After initial setup – please update to latest firmware!

(Note that the steps may be different depending on model/Android version you have)

- Press home button on remote
- Select Settings (Upper right corner cog icon)
- Select Device preferences
- Select About
- Select System software update

## 2. URL launch from USB stick

Autorun URL from USB stick.

### 2.1 Timer settings

First you need to set auto on function.

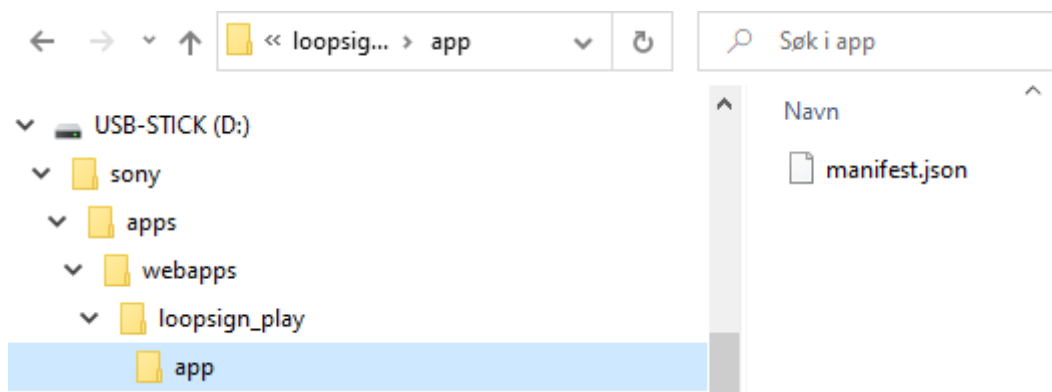
- Press “Home” on your remote
  - Select “Timers” menu icon in upper right corner
  - Set the desired auto on time and duration for your screen
- (It does not matter what input you select)

- Set sleep timer to “off”

### 2.2 Prepare USB stick

Take an unused empty USB stick and download this file: <https://loopsign.eu/sony.zip>

Unzip the file structure to your USB stick. The stick should now have the following file structure:



Edit the **manifest.json** file with any text file editor, for example notepad or Notepad ++  
 Change the "Web\_URL" to the screen you like to play.  
 Make sure to keep the format of the file and do not modify or delete any of the other content in the file. Only modify the "https://play.loopsign.eu/app/xxxx/yyyyyy"

```
{
  "name": {
    "default": "en_US",
    "en_US": "launch loopsign web_url"
  },
  "aid": "loopsign.url.launch.loopsign_play",
  "version": "1.0",
  "manifest_version": "1.0",
  "app": {
    "launch": {
      "web_url": "https://play.loopsign.eu/app/20/lsp/"
    }
  },
  "minimum_web_platform_version": "1.0"
}
```

After you have saved the file, you can just plug it into your screen and the LoopSign URL will automatically launch within 10-15 seconds. (If you unplug it again it will stop) So every time the screen is turned on the specified URL will launch.

Note, that the screen is not running in "pro mode" so be advised that when not in "Pro Mode" you cannot set any PIN code for entering screen settings to prevent anyone to tamper with settings.

### 3. Sony Android 8/9/10

#### 3.1 Set Automatic Schedule on/off

It's highly recommended to configure automatic on off according to your needs. To shut down the screen when it's not needed will prolong it's lifespan. Even if you require your screen to be on 24/7, schedule a short on/off each night (For example off 02:57 and on 03:00) This to give your screen a daily reboot. All these settings are done in "pro mode" Please refer to your operating manual for entering pro mode and configure settings.

<https://pro-bravia.sony.net/guides/index.html>

#### 3.2 Internal Web Browser configuration

Settings might be a bit different between android 8, 9 and 10, but they are quite similar.

If the screen has been previously used, we recommend loading factory defaults. Please refer to you operating manual.

Also set basic settings to make sure no one can change your screens settings

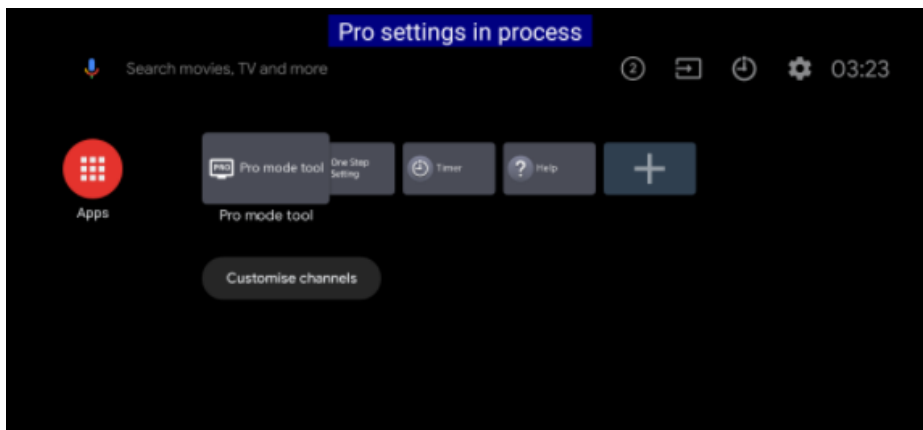
<https://pro-bravia.sony.net/guides/tutorial/>

Please also refer to Sony professional web site for videos and further information about Pro Mode

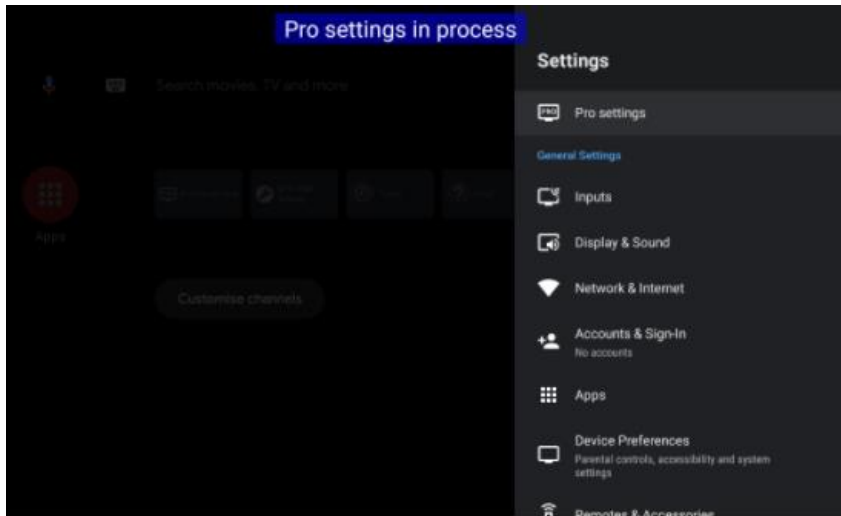
<https://pro-bravia.sony.net/guides/mode/index.html>

First you need to enter "Pro Mode"

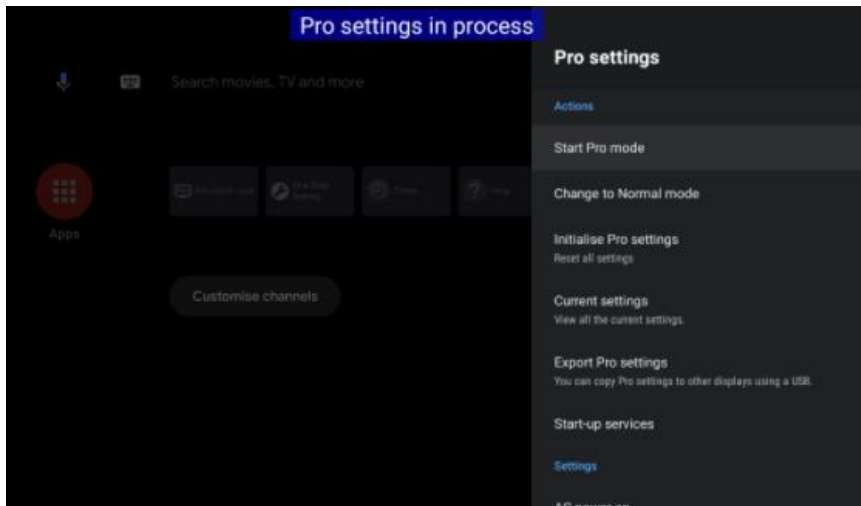
[HOME] Apps > Pro mode tool



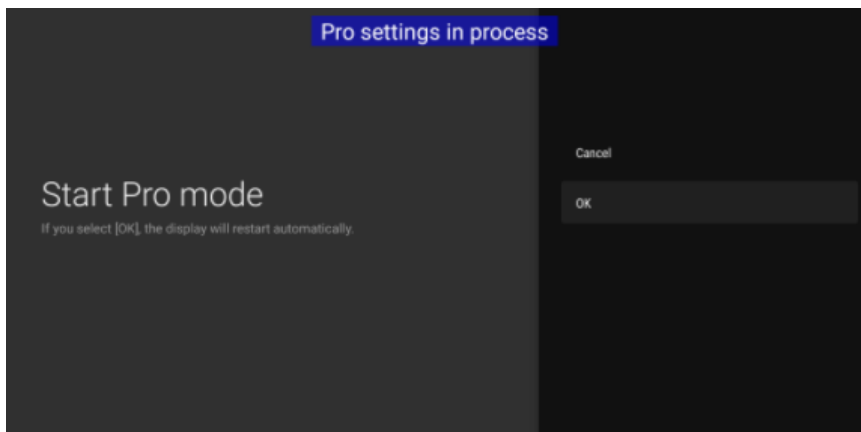
[HOME] Settings > Pro settings



[Pro settings] Actions > Start Pro mode

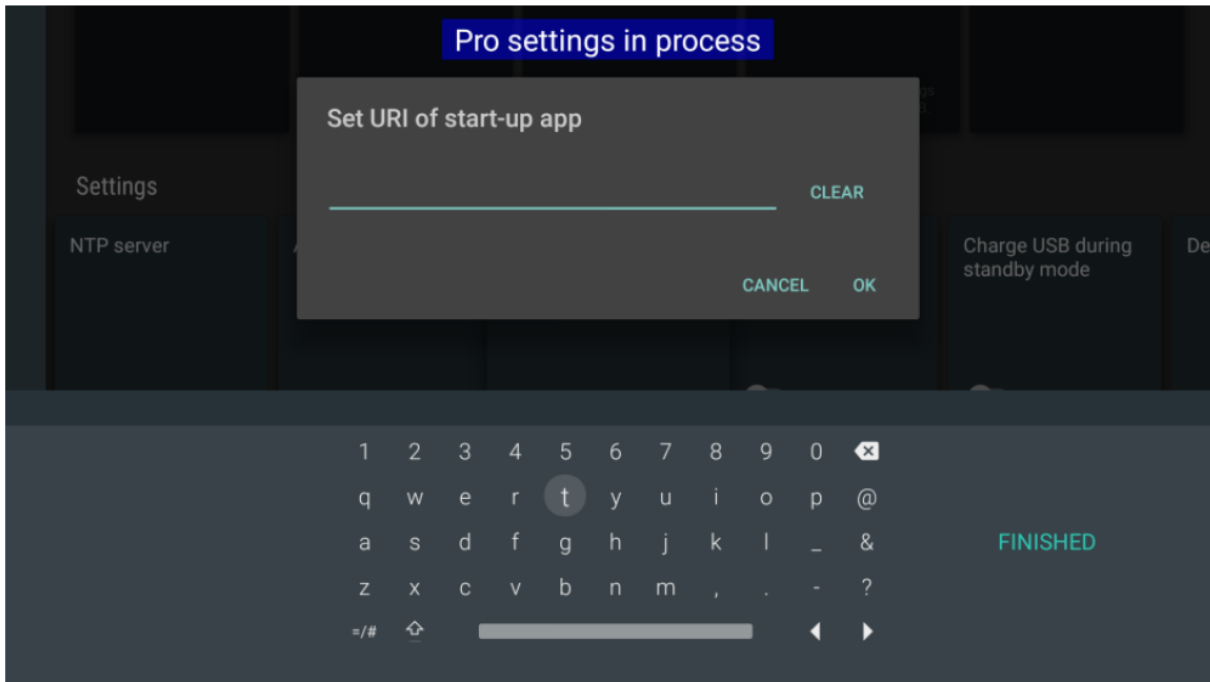


Select "OK" and the screen will reboot to "Pro Mode"

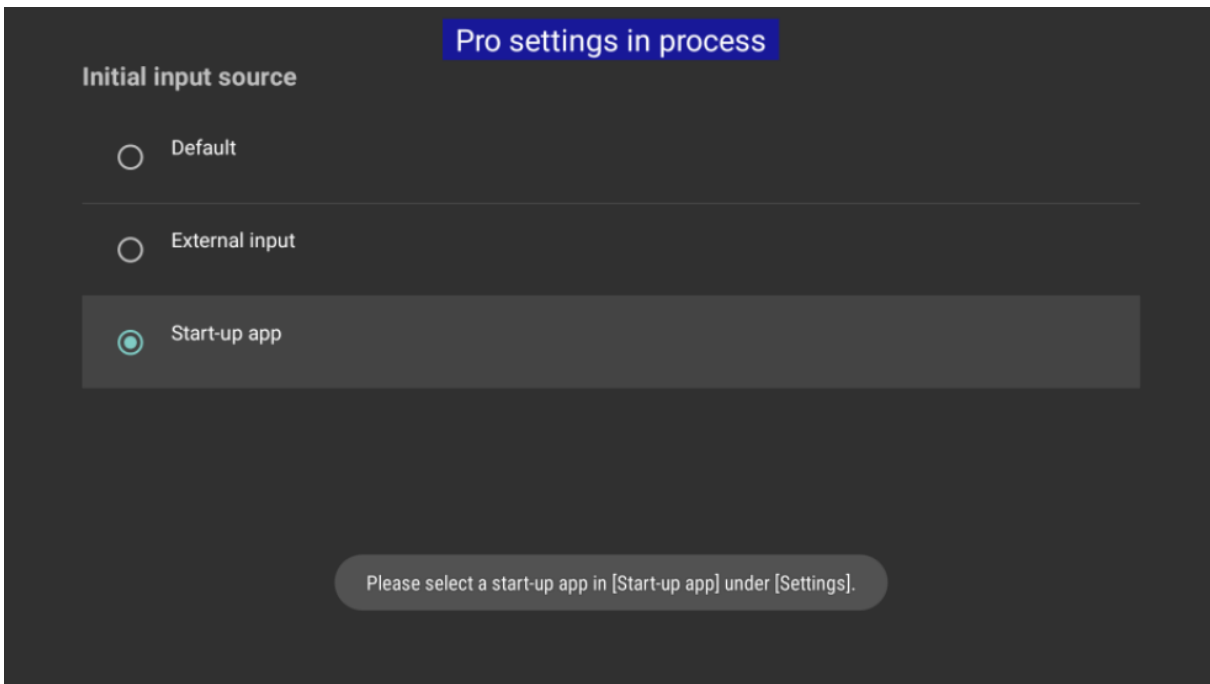


The display will reboot and switch to Pro mode. (It will take some time.)

After “pro mode” is started, enter “Pro settings”  
Select “Start-up app” and enter the LoopSign URL you want it to automatically start



Select “Initial input source” in the menu and select “start-up app”



Alternatively set PIN code to protect the screen from anyone tampering with your settings.  
To finish and activate settings, activate “pro mode”

