

Vestel - LoopSign Deployment Guide

This guide is for models from Q3/Q4 2022 and newer

LoopSign utilizes the built in Signage HTML5 player in Vestel screens. This makes it very easy to set up and run without any need for application installation or external player.

Content

1. Initial setup.....	2
1.1 Factory reset.....	2
1.2 Initial setup.....	2
2. Configure HTML5 CMS	3
3. Configure scheduling.....	4

1. Initial setup

If you have a brand new unused screen you can skip the factory reset step and jump to 1.2

1.1 Factory reset

It is recommended to start with a factory reset of your screen.

- Press “MENU” on the remote and select “Signage Settings”
- Select “First Time Installation” and enter PIN code (Default is 0000)
- Select Next and press “Back” on the remote (To close keyboard) then ok to login.
- Then select “Erase Everything”

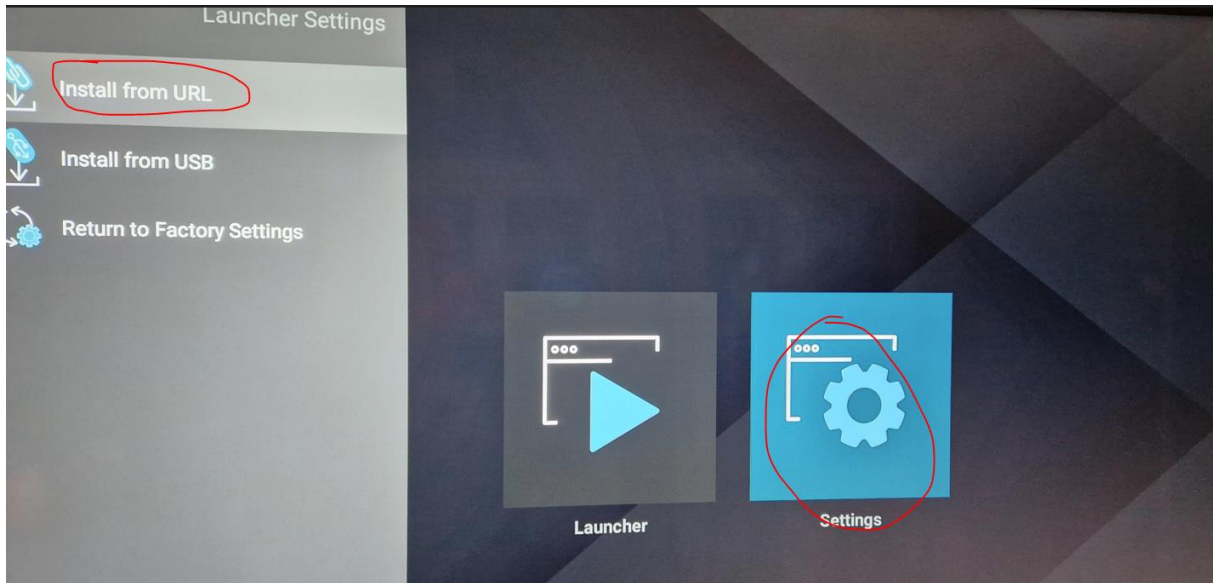
Screen will erase all settings and return to factory defaults. Initial setup menus will be launched.

1.2 Initial setup

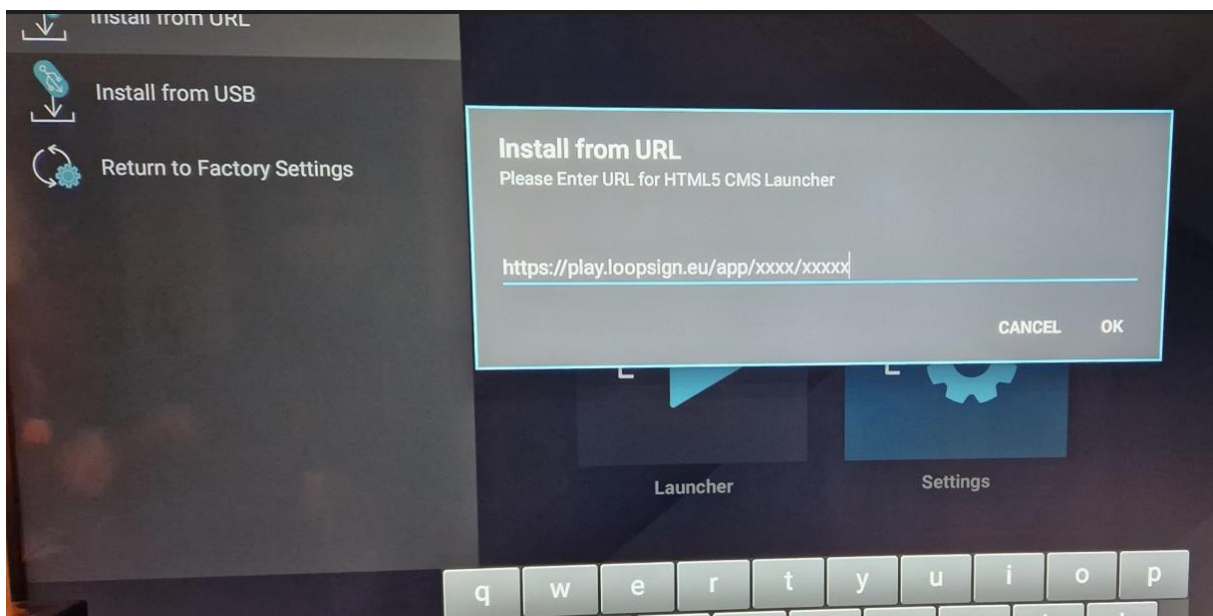
- Select language (In this guide we use English)
- Select country (This is important to get correct time zone)
- Set PIN code or just Skip Pin if you want to use default 0000
- On next screen no settings are needed, so just press menu item NEXT.
- Select “HTML5 CMS Launcher” as Auto launch
- On next screen no settings are needed, so just press menu item NEXT.
- Under Network settings, set options according to your network.
Set “Network Standby Mode” to ON and in most cases default settings for the other options. Make sure your screen is network connected before you continue.
- After accepting the screen will start to run demo web content.

2. Configure HTML5 CMS

- When you have the Demo content running, click “BACK” on your remote to enter CMS setup
- Select “HTML5 CMS Launcher”
- Select “Settings”
- Select “Install from URL”



- Enter the desired LoopSign URL (You will find it in your LoopSign console)
(If you have a keyboard you can connect to USB it will be easier to enter URL)



- Select “Enter” on Virtual keyboard
- Press “BACK” on the remote and select “OK”
- Test the URL by selecting “Launcher”

3. Configure scheduling

We highly recommend enabling power on/off scheduling. Even if you are to run your screen 24/7 Set schedule to power off for 5 minutes every night, this to make sure your screen reboots every 24 hours.

- Press “MENU” on the remote control
- Select “Signage Settings”
- Select “Scheduler Settings”
- Set plan as you like and remember to set “Source” to “Last Source”
- Remember to Enable plan and Save

