

# Samsung Tizen 6.5 and 7.0 - LoopSign Deployment Guide

## LoopSign Samsung App

Please note that you need to have a professional display from Samsung with Tizen 6.5 or 7.0 SoC. Relevant models include QBB, QBM, QBC and QMC. Consumer TV models do not have the necessary built-in features and will not work with the LoopSign Player app.

It's always a good idea to have the latest firmware. Please check with your reseller.

### Content

1. Prerequisites .....	2
2. General settings – First time installation guide.....	2
3. Install/Configure .....	8
4. Enroll the display on your LoopSign account .....	13

## 1. Prerequisites

Make sure you have a Samsung professional display running Tizen 6.5 or Tizen 7.0 with the latest firmware. Contact your reseller, Samsung, or us directly to get the latest firmware.

Please note that consumer screen models will not work with Digital Signage, they do not have the necessary settings and features.

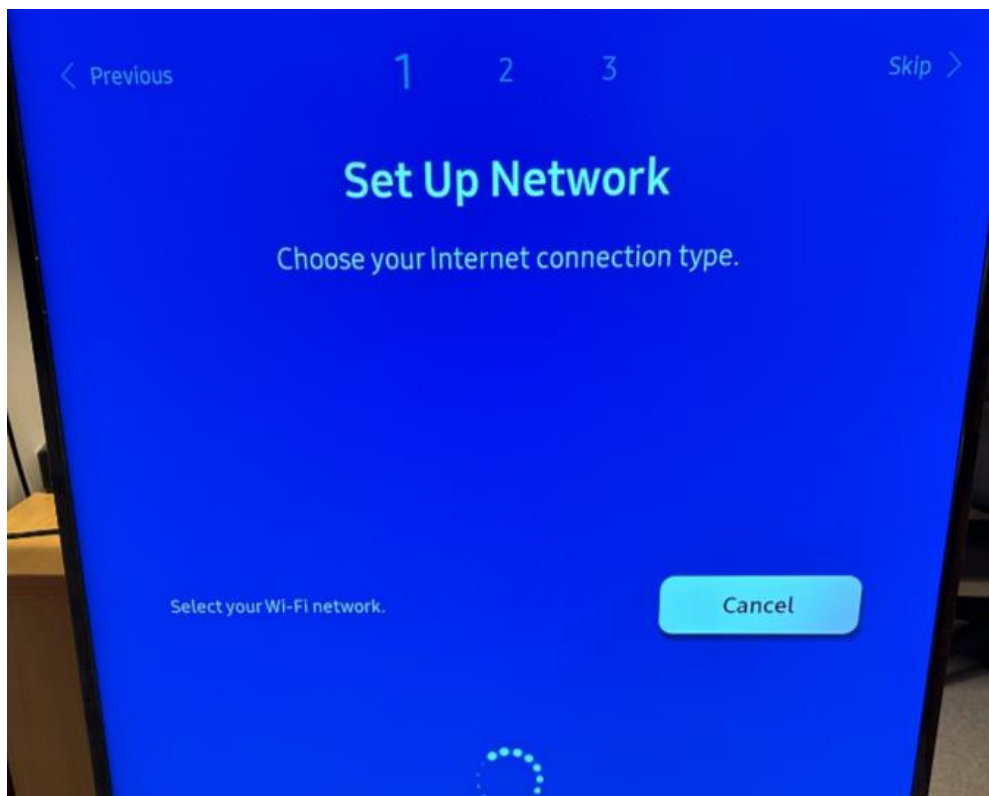
**The screenshots in this guide are of a Samsung Tizen 7.0 professional display.**

## 2. General settings – First-time installation guide

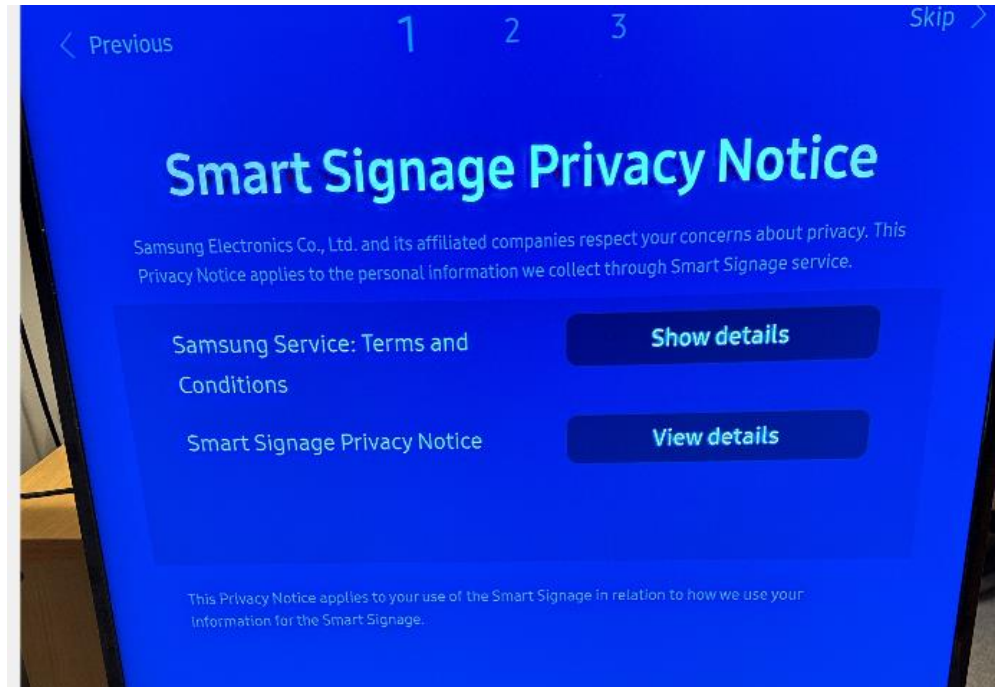
- Go through the first-time installation guide.



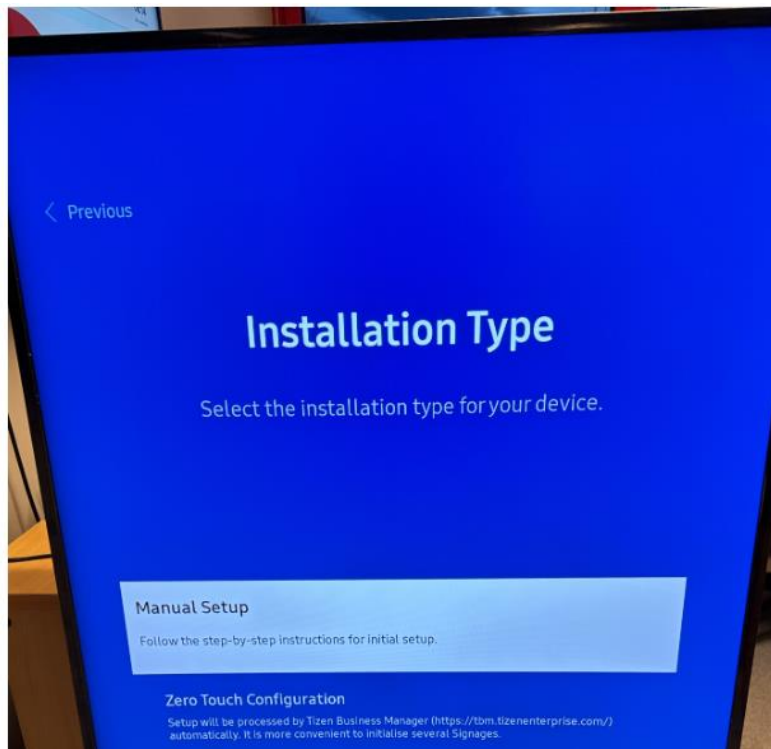
Connect to network (ethernet recommended)



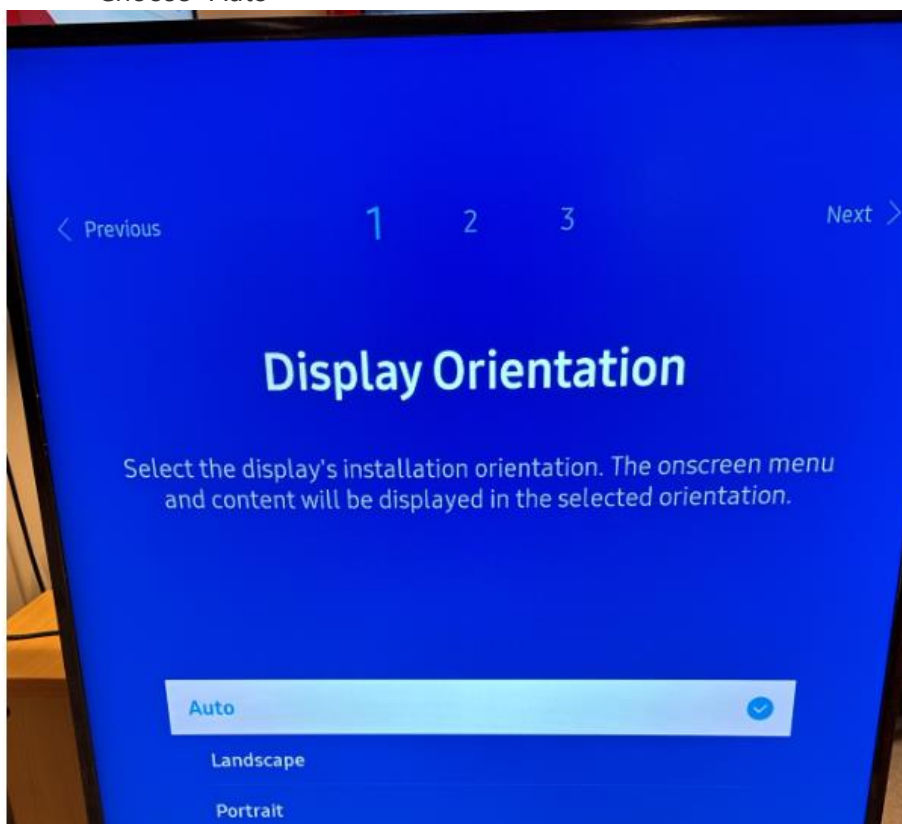
Choose "OK"



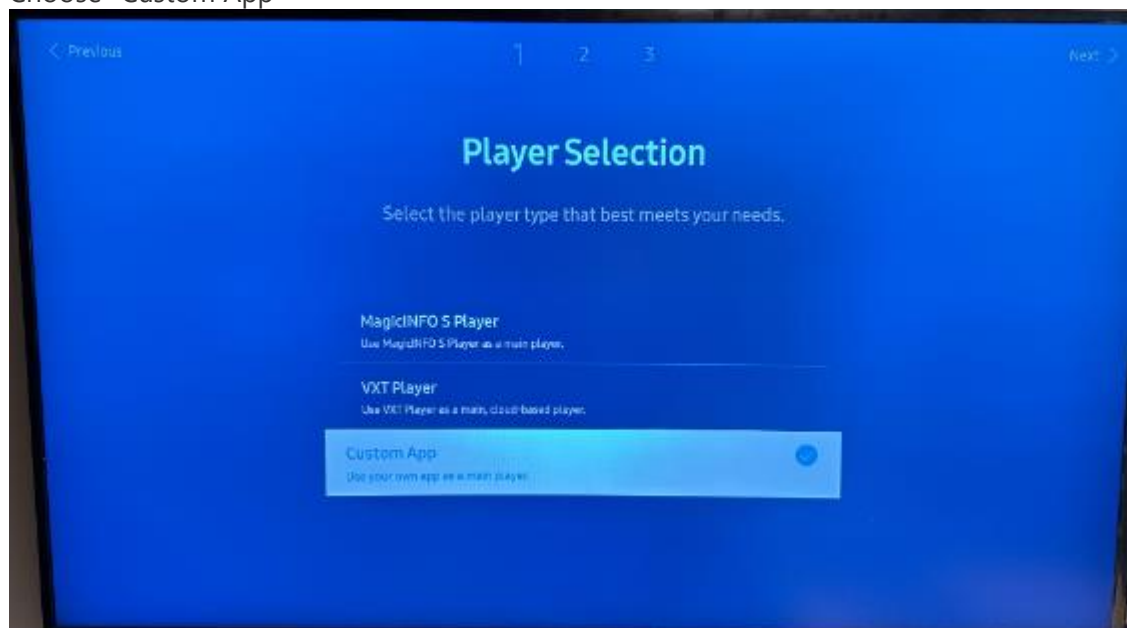
- Choose "Manual Setup"



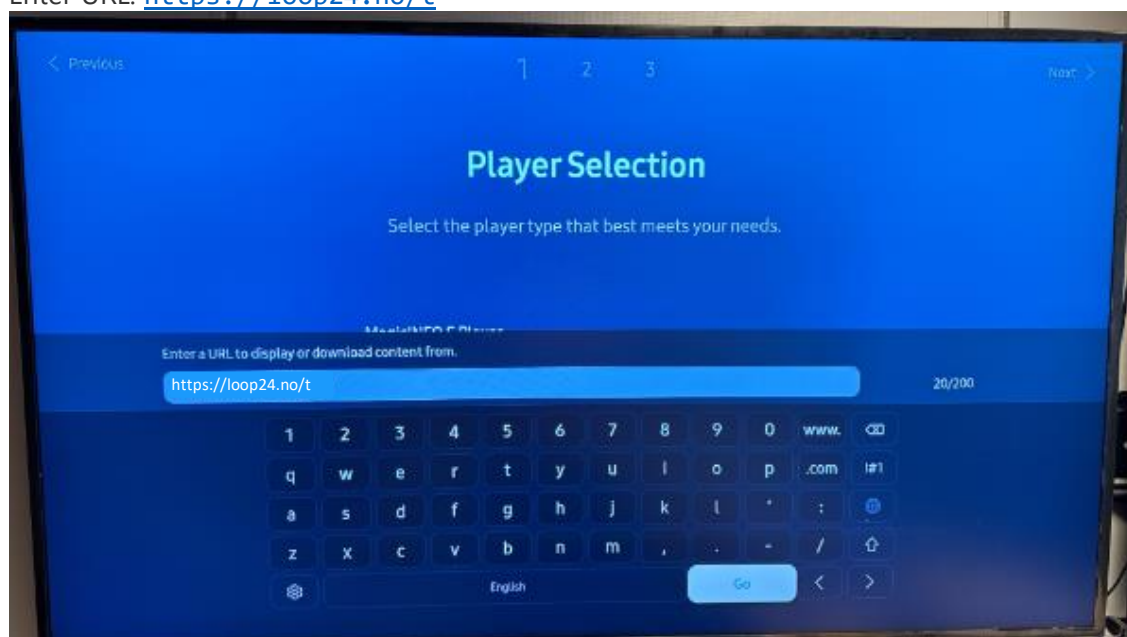
- Choose "Auto"



Choose "Custom App"



Enter URL: <https://loop24.no/t>



Choose «Skip»

< Previous 1 2 3 Next >

## Connect to MagicINFO Server

Enter the server information to manage your device.  
Select Skip to set it up later.

Server Address	127.0.0.1
TLS	Don't Use
Port	7001

Next Skip

Choose «Off»

< Previous ✓ 2 3 Next >

## Auto Power Off

Choose how long the display will stay on before turning off after no user interaction is detected.

If this display is used for public display, you may select Off on settings. If not, the display may turn itself off unexpectedly while the content is being played.

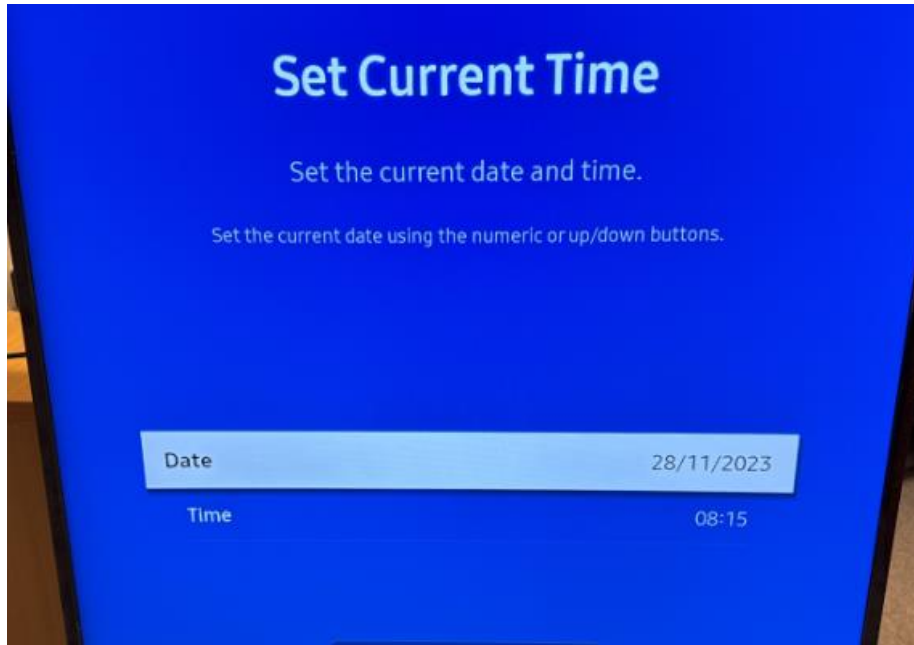
Off ✓

4 hours

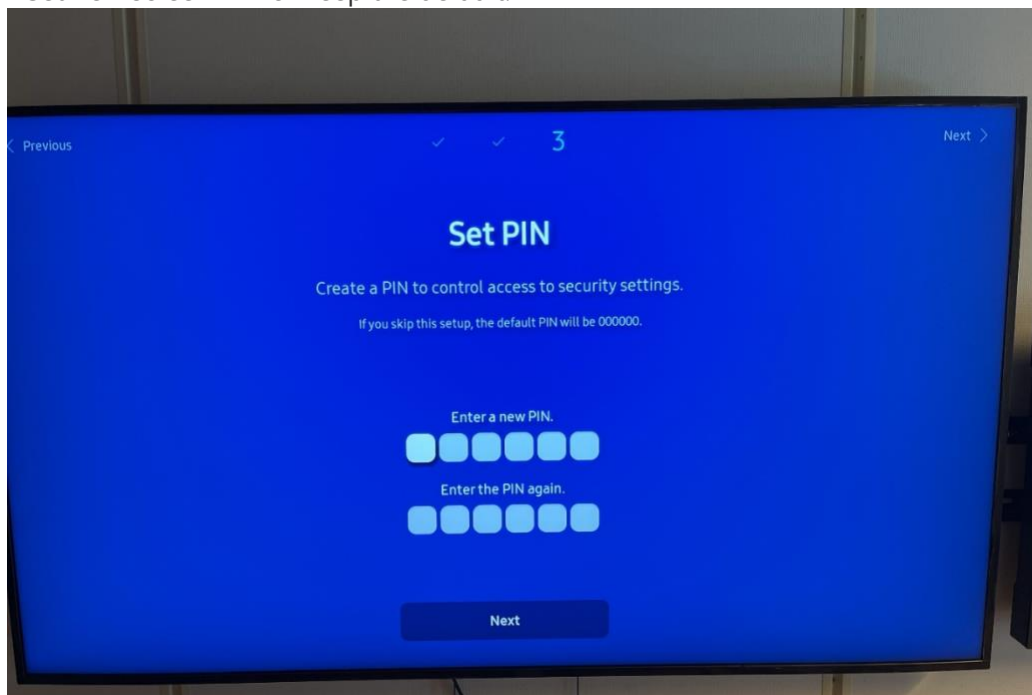
6 hours

8 hours

- Set date and time



- Set new screen PIN or keep the default.



- First time installation guide complete



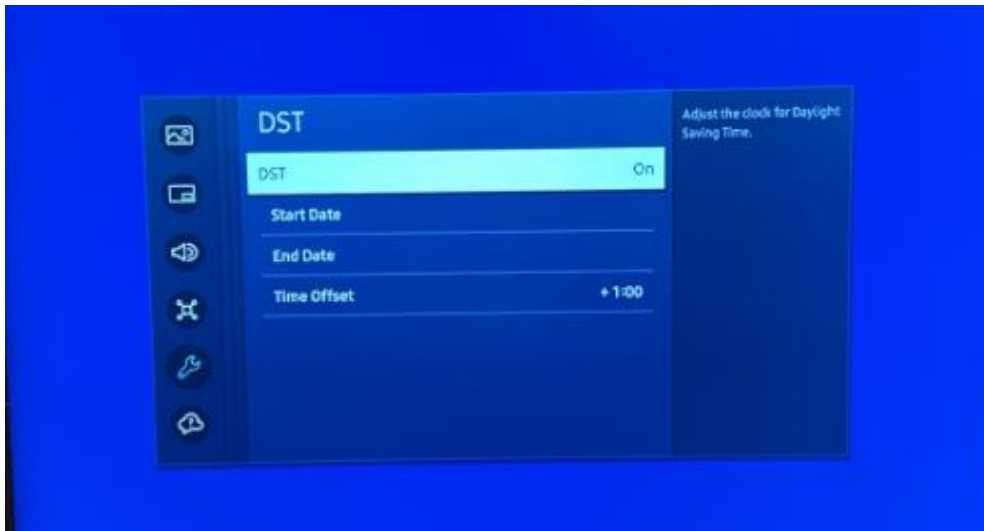
### 3. Install/Configure

Menu button on remote → System → Time → DST. Set DST to "On" and set start and end date correctly.

Settings for Norway:

Start date: Last Sunday in March at 2.00 am.

End date: Last Sunday in October at 3.00 am.



Menu button on remote → System → Power Control. Set the settings as shown in the picture below.

Auto Power On → ON

Standby Control → OFF

Remote Configuration → ON

Power Button → POWER ON ONLY

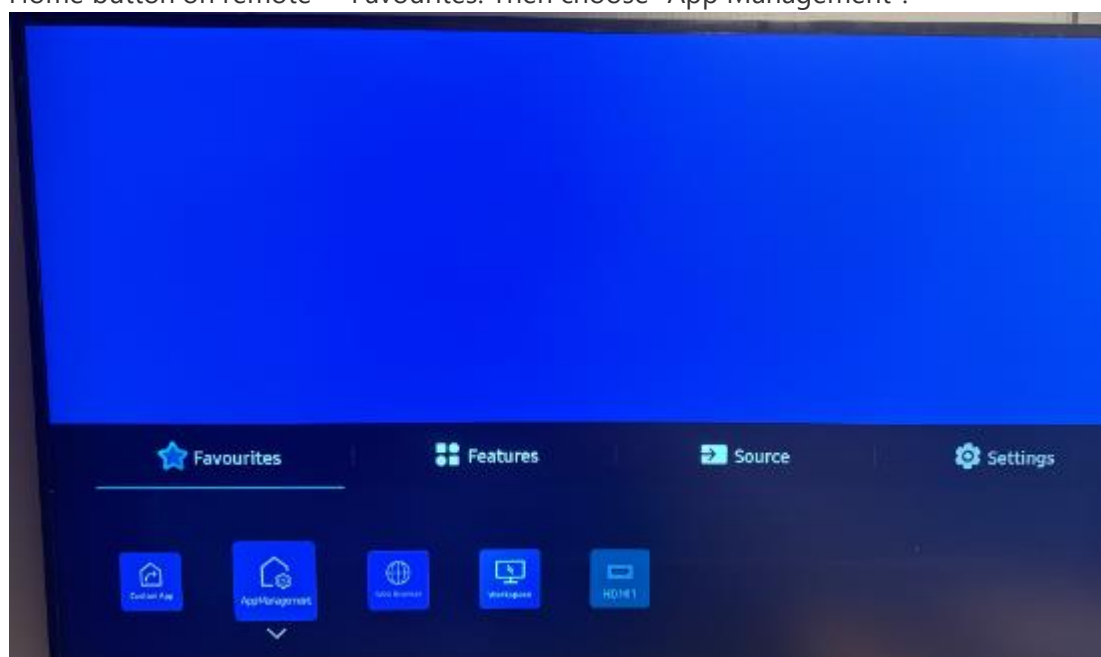




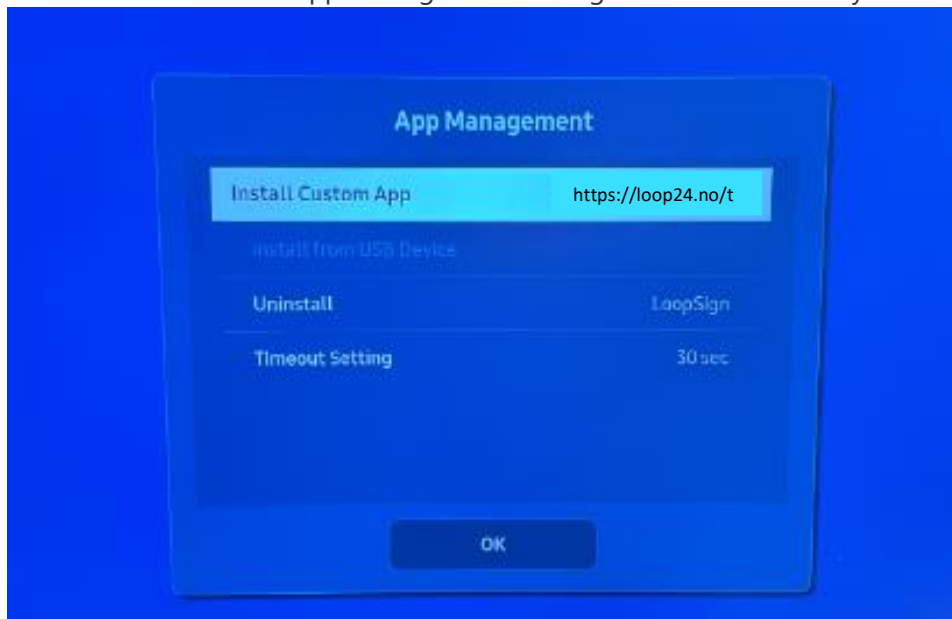
Menu button on remote → Picture → Advanced Settings.  
Picture Enhancer → OFF



Home button on remote → Favourites. Then choose "App Management".



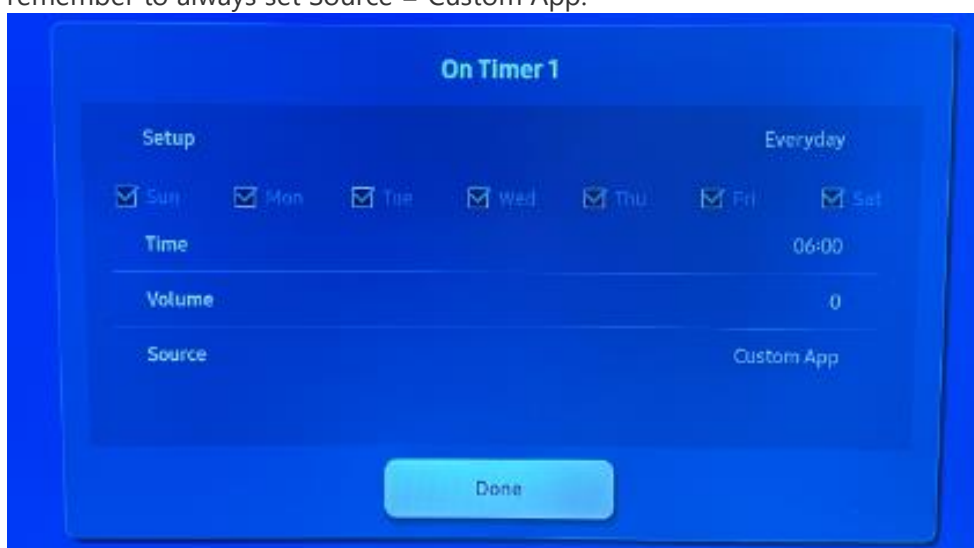
Double-check that the App Management settings are shown correctly as below.



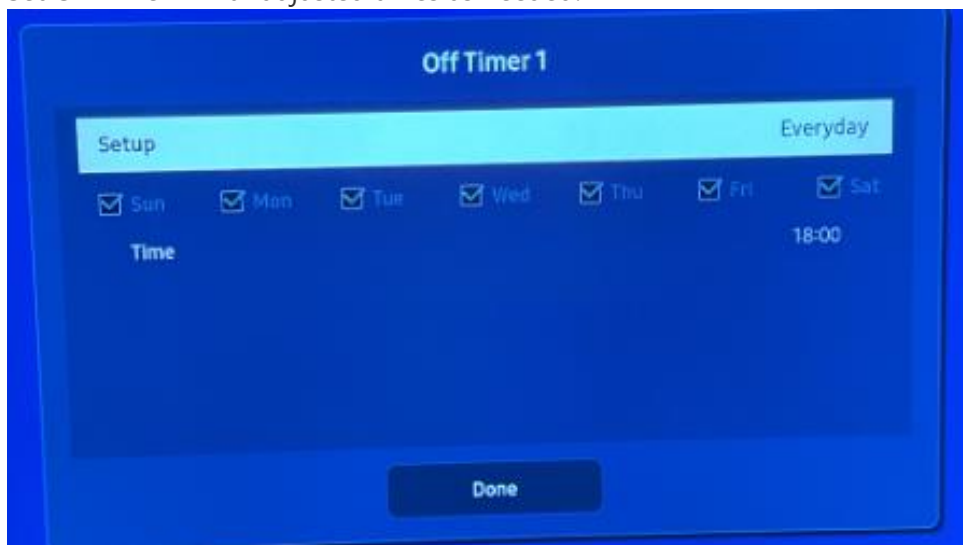
Home button on remote → Settings → On/Off Timer.



Set On Timer 1 as shown in the picture below. Adjust weekdays and time as needed, but remember to always set Source = Custom App.



Set Off Timer 1 with adjusted times as needed.



Home button on remote → Favourites. Then choose Custom App/LoopSign (which is always the left-most alternative in the bottom horizontal menu).

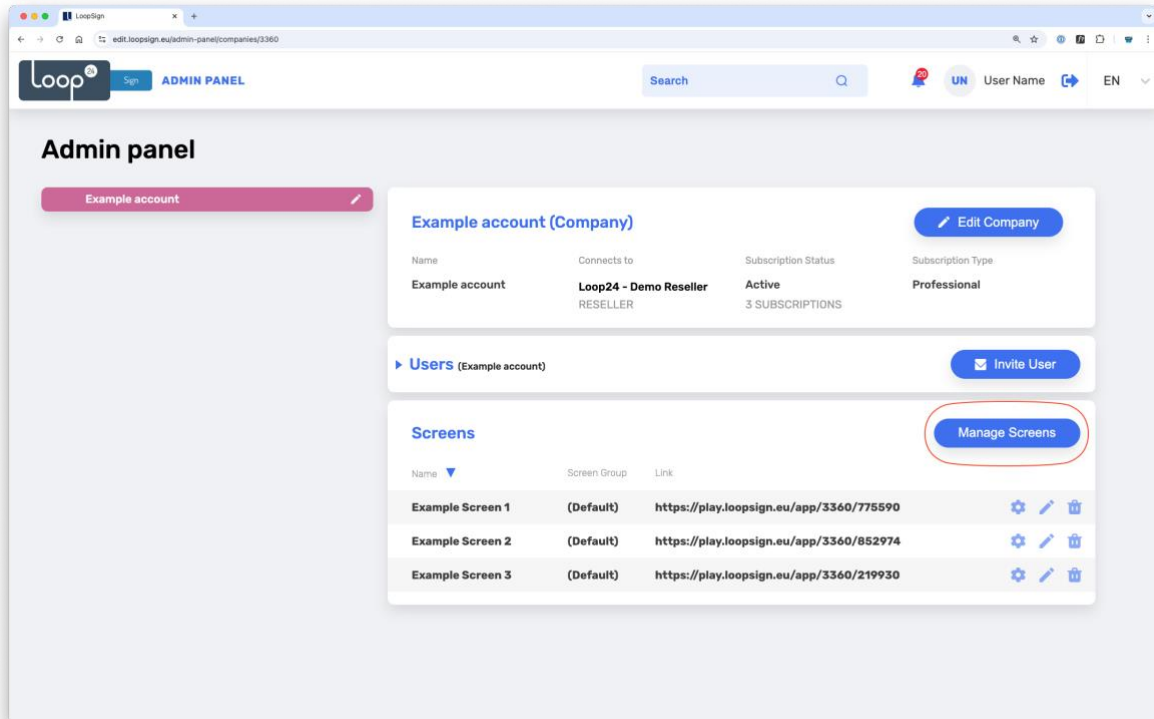


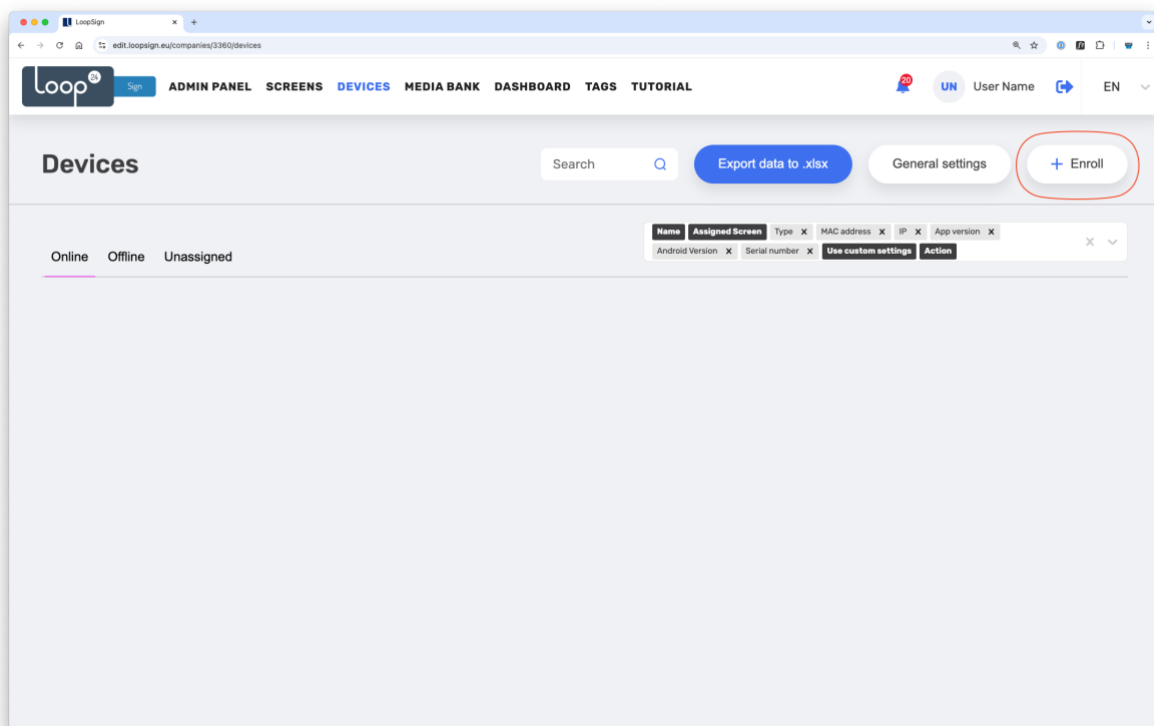
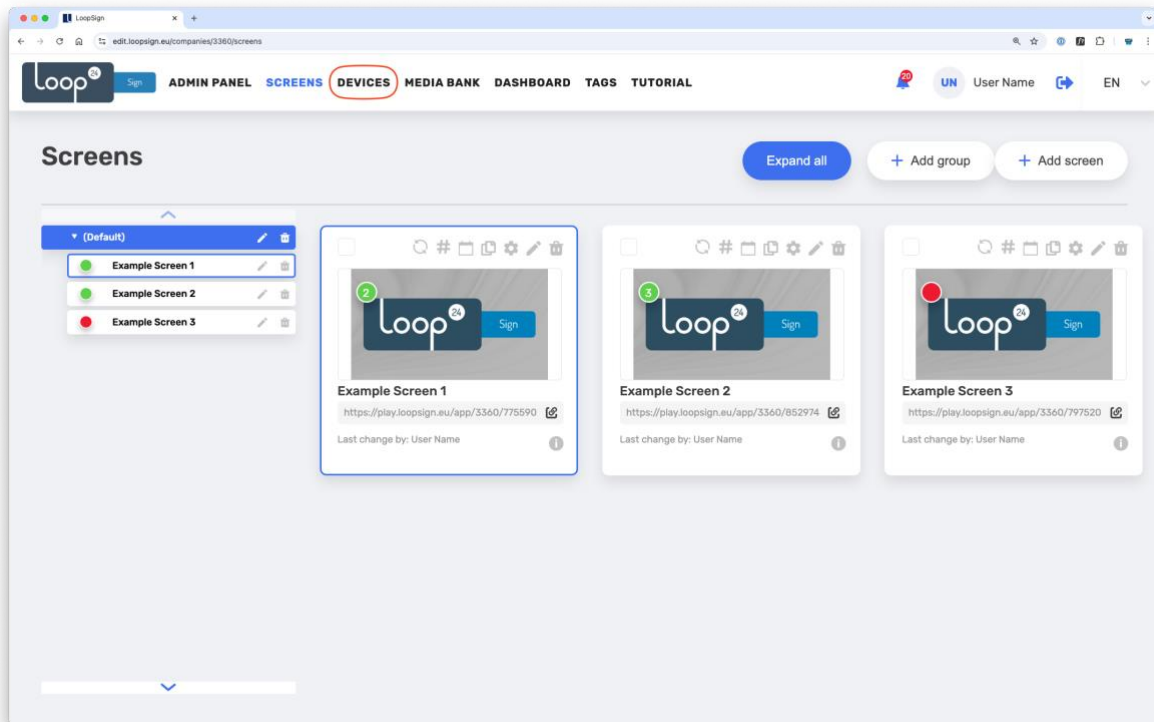
The LoopSign app will start and show the screen's hash code. To show content LoopSign, the code needs to be paired with a LoopSign screen on your account.

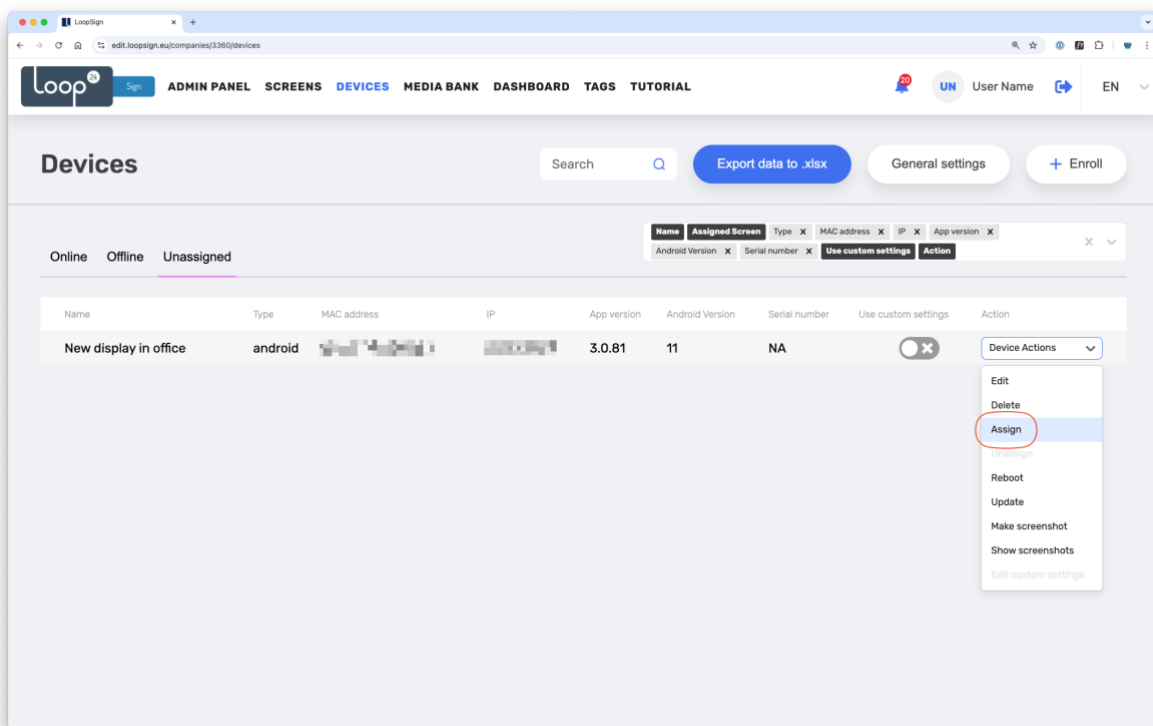
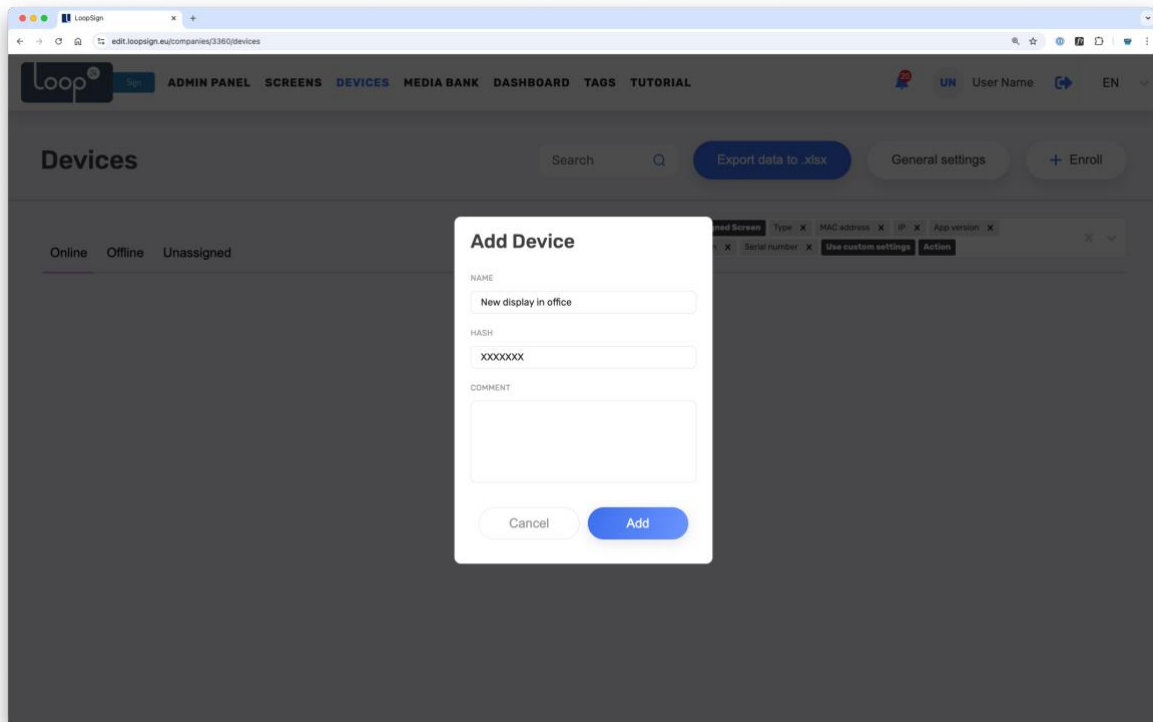


## 4. Enroll the display on your LoopSign account

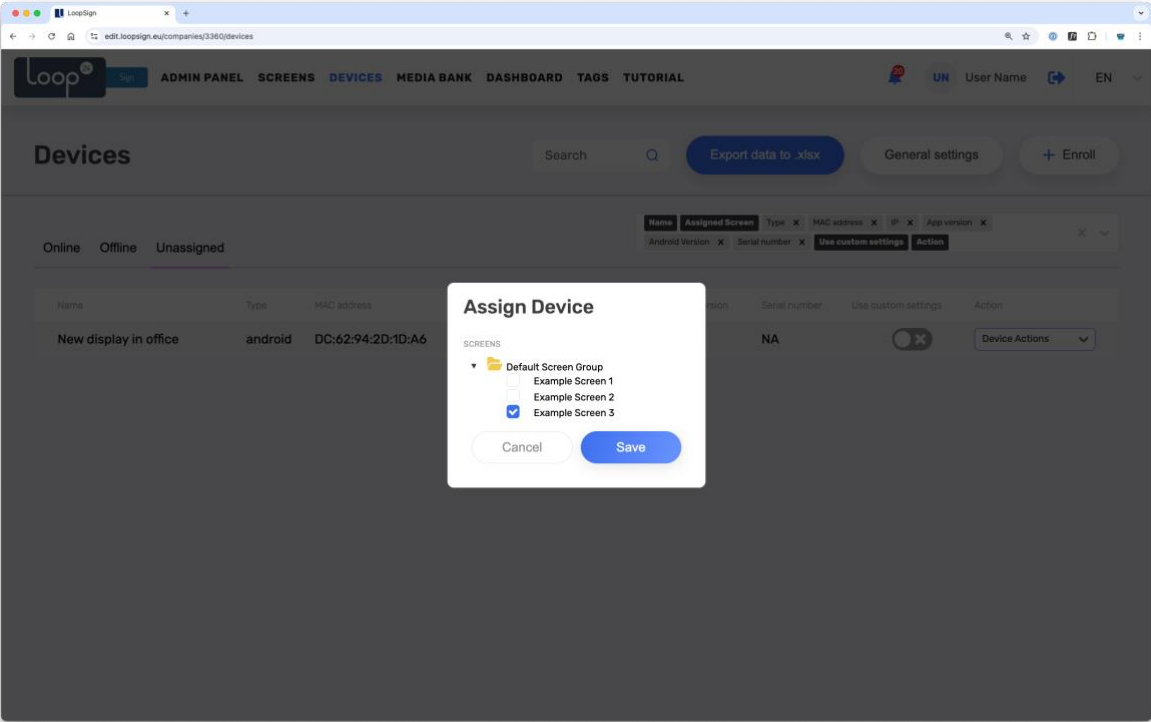
Log in to LoopSign, and then click *Manage Screens*. After that, click *Devices* in the top menu. In the Devices overview, click *+Enroll* to add the display to your LoopSign account, using the hash code showing on the display. After that you can assign the display to a LoopSign screen to immediately have your display start playing your LoopSign content.











Congratulations! You've now successfully configured your display, enrolled it to your LoopSign account and assigned it to play content from a LoopSign screen.

