

# Hisense - LoopSign Deployment Guide

To make LoopSign run on Hisense screens you will need to install the LoopSign Player Application.

## Content

1.	General settings.....	2
	Set Automatic Schedule on/off .....	2
2.	Install LoopSign Player Application .....	2
	2.1 Hisense M-series screen (24/7).....	2
	2.2 Hisense E-series screen (16/7) .....	3
3.	Enroll the display on your LoopSign account .....	4

## 1. General settings

Initially you must make sure you have configured correct time zone, time/date and automatic on/off schedule. Correct time/date is essential for LoopSign. Please refer to Hisense user manual.

### Set Automatic Schedule on/off

It's highly recommended to configure automatic on off according to your needs.

To shut down the screen when it's not needed will prolong its lifespan. Even if you require your screen to be on 24/7, schedule a short on/off each night (For example off 02:57 and on 03:00)

This to give your screen a daily reboot. Please refer to Hisense user manual.

## 2. Install LoopSign Player Application

Download the latest Application here:

<https://loop24.no/lspdm.apk>

Unzip the file and copy the APK file to a USB stick.

(You can also download the app directly to the display by using the display's built-in web browser.)

### 2.1 Hisense M-series screen (24/7)

- When you insert the USB stick in the screen it will ask if you should open the USB content. Confirm this option.
- Use the arrows on your remote to navigate to the APK file and select it/start it.
- If the screen asks for approval for installation of the ap, go in and allow install. Then go back with arrow back on the remote to continue installation.
- Select "INSTALL" in lower right corner  
When App is installed select "OPEN" if it asks for access to pictures/media and files, select allow on all of them.

The Screen is now set to autostart the LoopSign Player Application, so you now only need to configure the settings in the LoopSign Player app. Go to **section 3** in this document.

## 2.2 Hisense E-series screen (16/7)

- Insert the USB stick and press the “USB” Button on the remote
- Use the arrows on your remote to navigate to the APK file and select it/start it.
- If the screen asks for approval for installation of the ap, go in and allow install.  
Then go back with arrow back on the remote to continue installation.
- Select “INSTALL” in lower right corner  
When App is installed select “DONE”

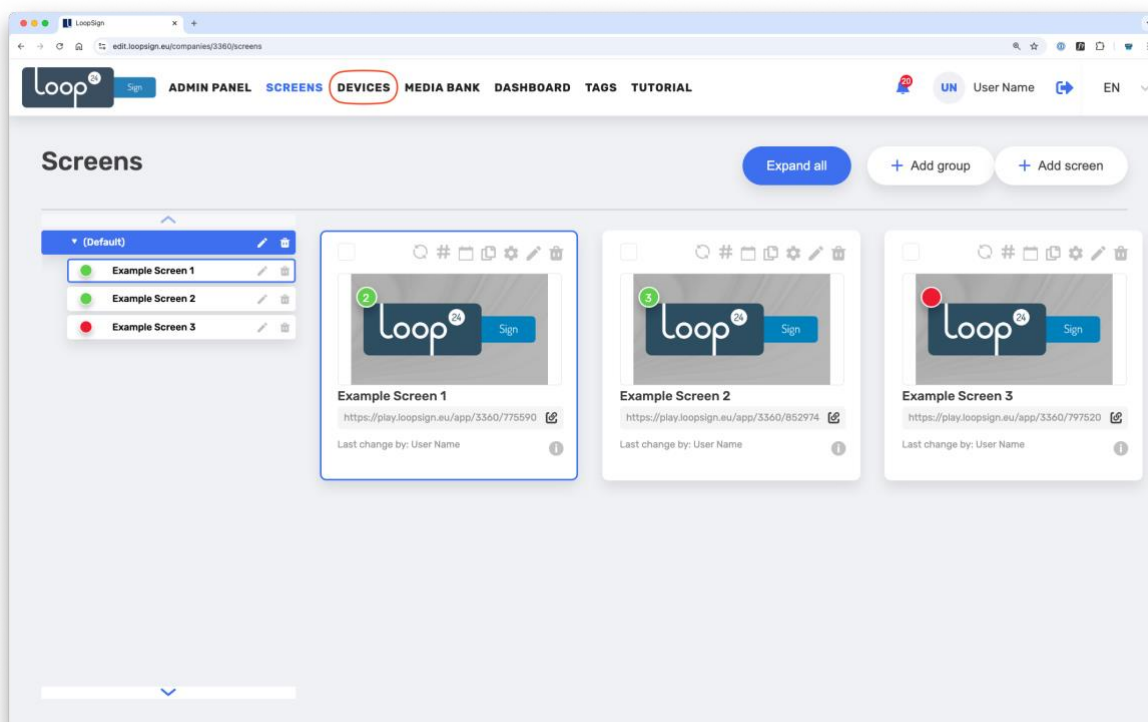
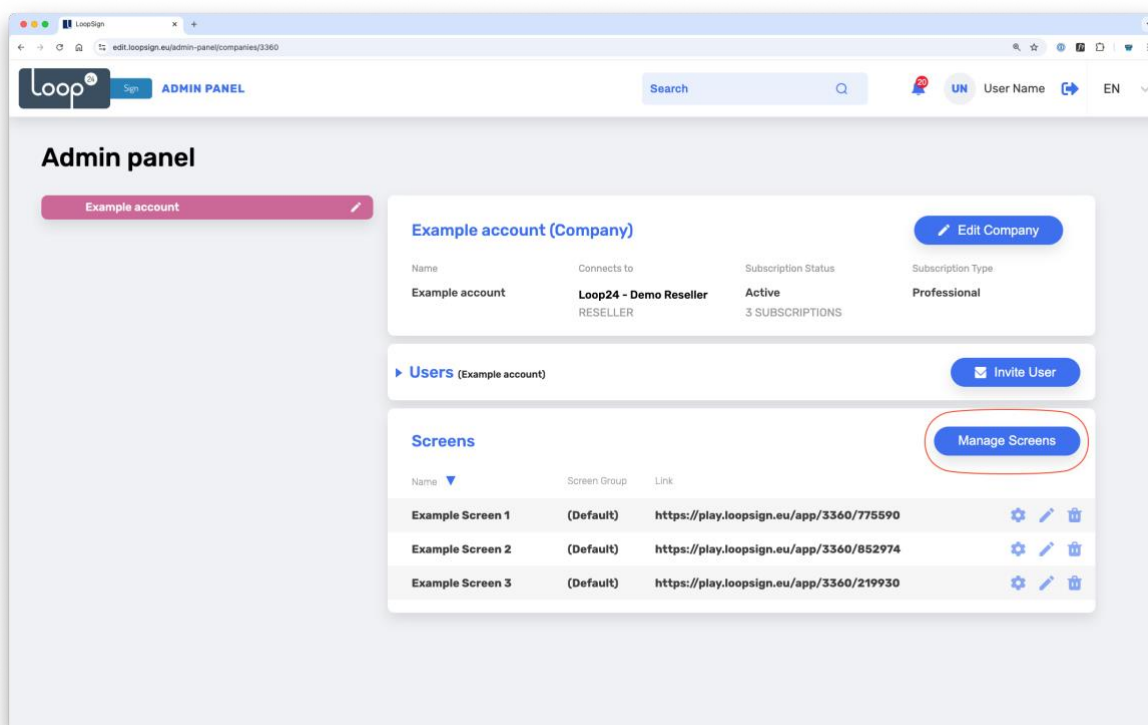
### To set automatic start of the installed LoopSign Player app.

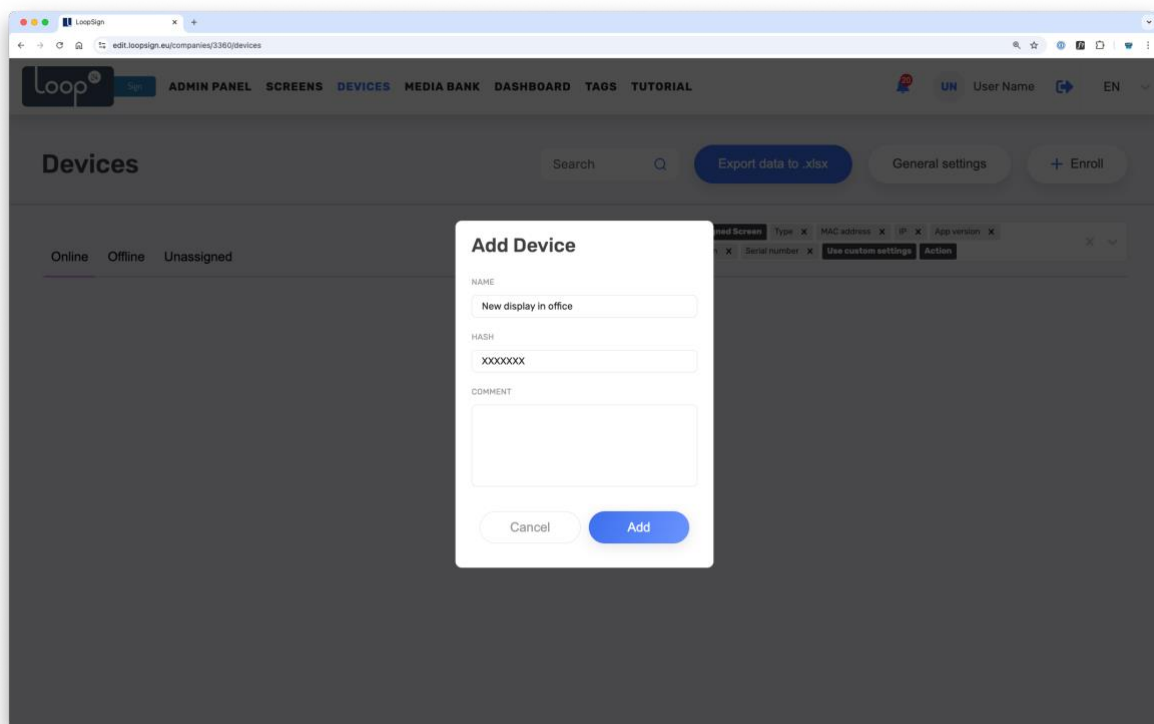
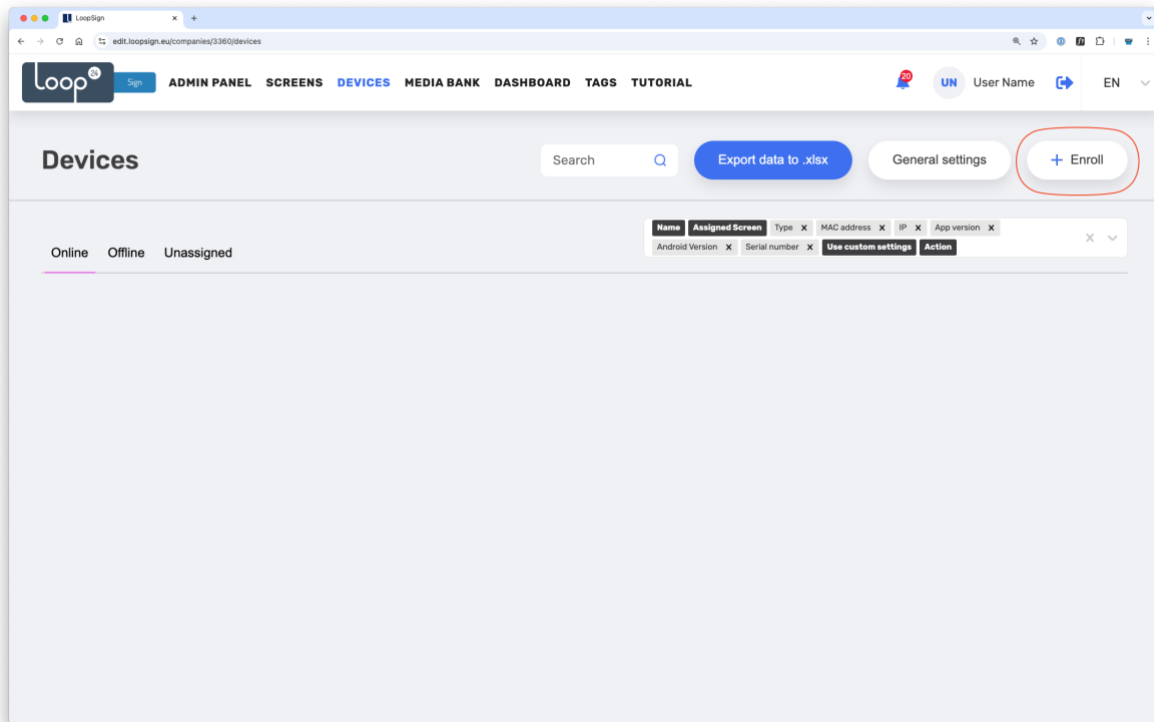
- Press “Menu” on the remote
- Go down in the menu to “Device Management”
- Select “Boot Source” and choose “Customer” (Yes there is a typo in the menu)
- Then choose “Custom Settings”
- Select “Custom App on”
- Under “Select App”, choose LoopSign Player

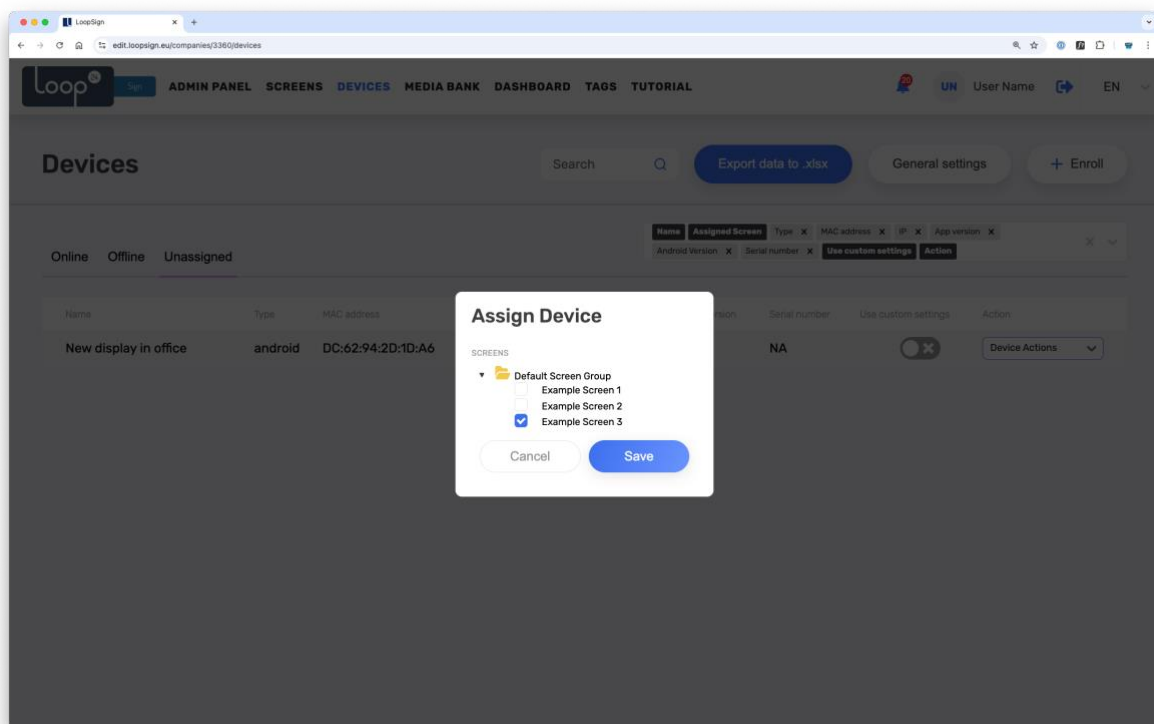
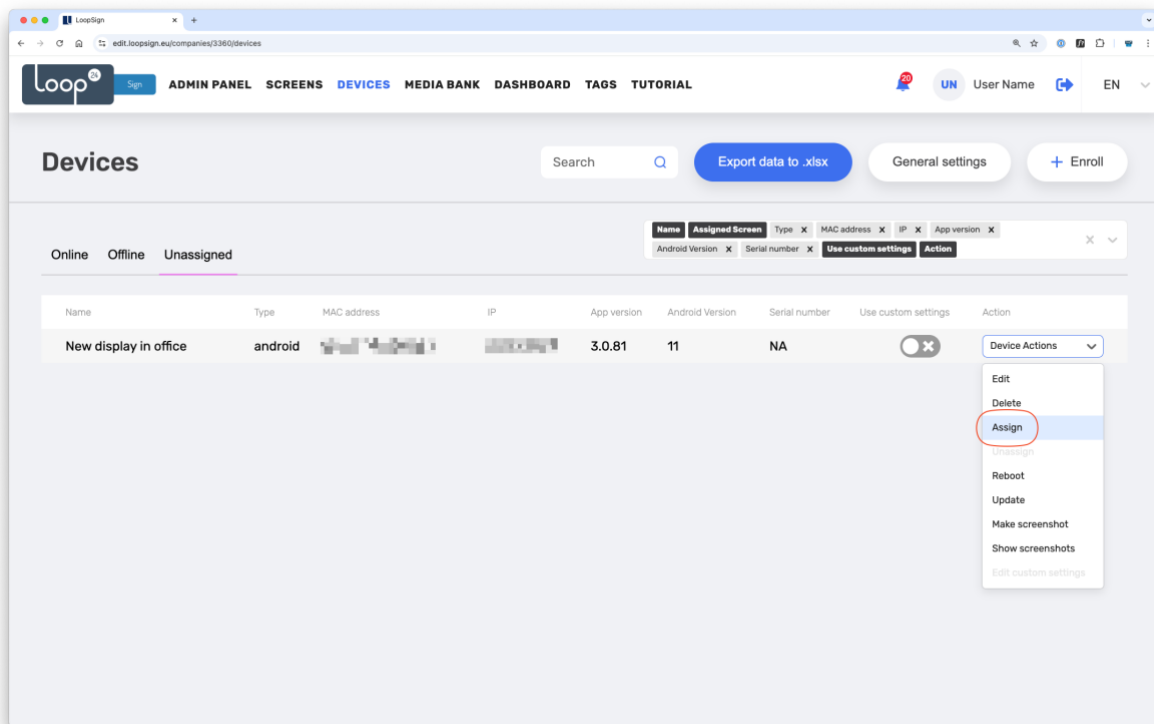
The Screen is now set to autostart the LoopSign Player Application, so you now only need to configure the settings in the LoopSign Player app. Go to **section 3** in this document.

### 3. Enroll the display on your LoopSign account

Log in to LoopSign, and then click *Manage Screens*. After that, click *Devices* in the top menu. In the Devices overview, click *+Enroll* to add the display to your LoopSign account, using the hash code showing on the display. After that you can assign the display to a LoopSign screen to immediately have your display start playing your LoopSign content.







Congratulations! You've now successfully configured your display, enrolled it to your LoopSign account and assigned it to play content from a LoopSign screen.

