

# BenQ - LoopSign Deployment Guide

Deployment of LoopSign on your BenQ ST04 display is very easy. LoopSign utilizes its Android app on BenQ's custom Android OS to play content.

This guide shows how to set up LoopSign locally, and for this, it is recommended to use a keyboard/mouse connected to the display, along with the display's included remote control.

Via BenQ's flexible and free remote management software, BenQ DMS, much of the initial setup can be done even more easily from a computer, and you will also be able to fully monitor and control the display's settings remotely after setting it up. Please contact your BenQ representative for more info about BenQ DMS.

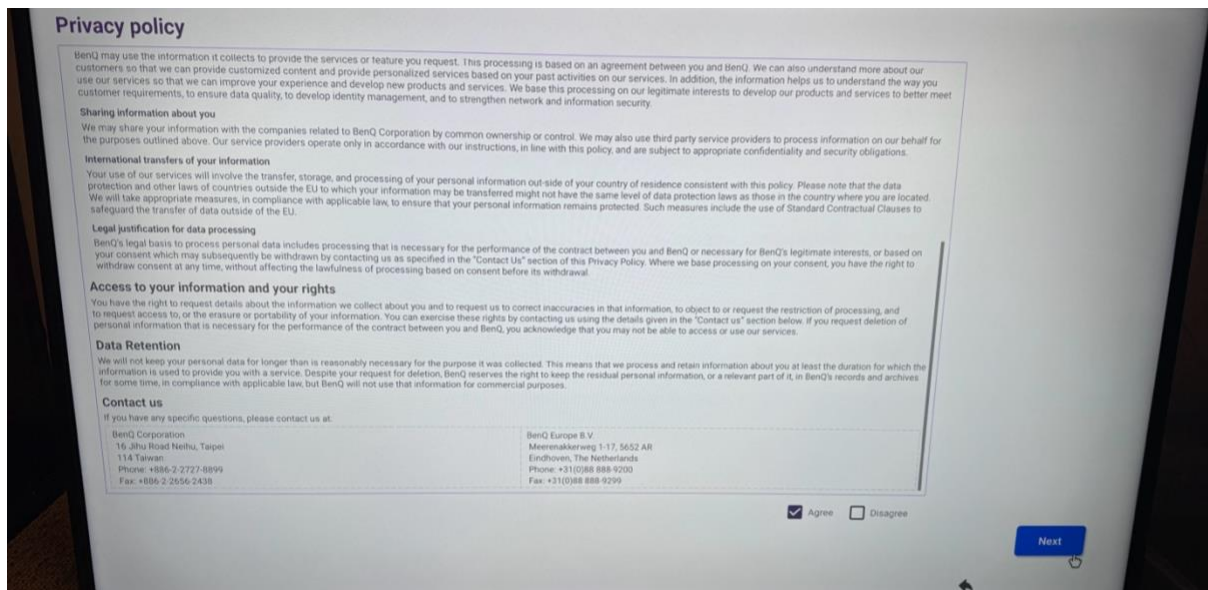
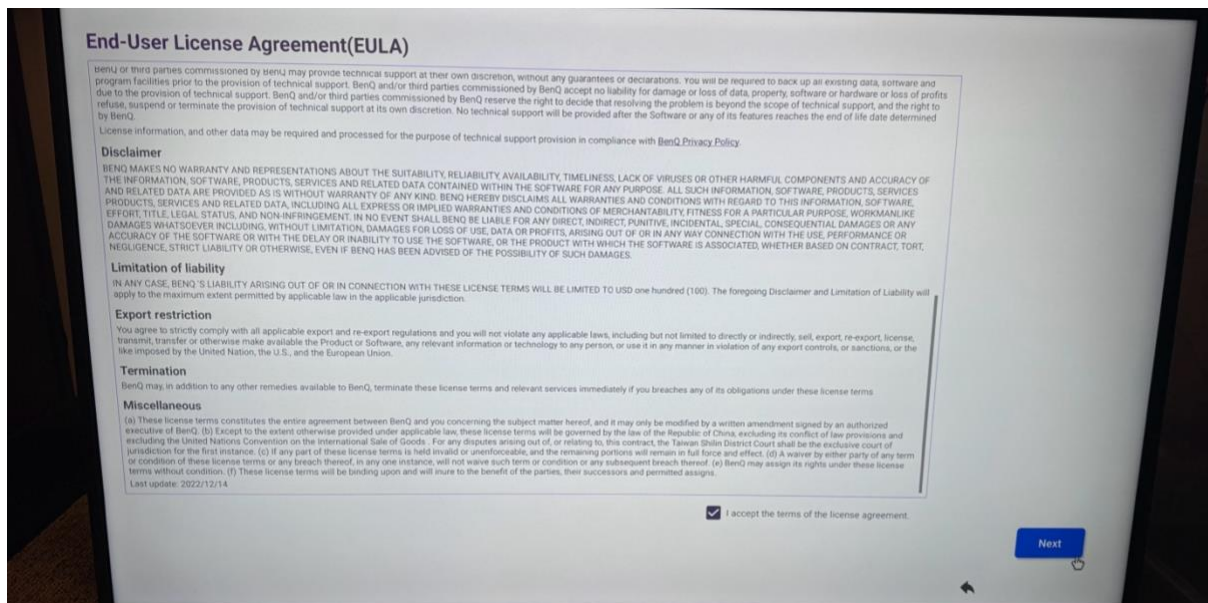
Connecting the display to ethernet is always highly recommended, but wifi connections will usually work as well, given a strong and stable wifi connection.

## Content

1.	Go through the first-time setup menu .....	2
2.	Install the LoopSign player app .....	3
2.1	Open the BenQ App Store.....	3
2.2	Install the BenQ Control app and the LoopSign Player app .....	4
3.	Configure display settings for power management and scheduling.....	5
4.	Open the LoopSign Player app .....	6
5.	Enroll the display on your LoopSign account .....	6

# 1. Go through the first-time setup menu

After turning on the screen for the first time, go through the steps of the first-time setup menu. Accept BenQ's EULA and Privacy Policy.

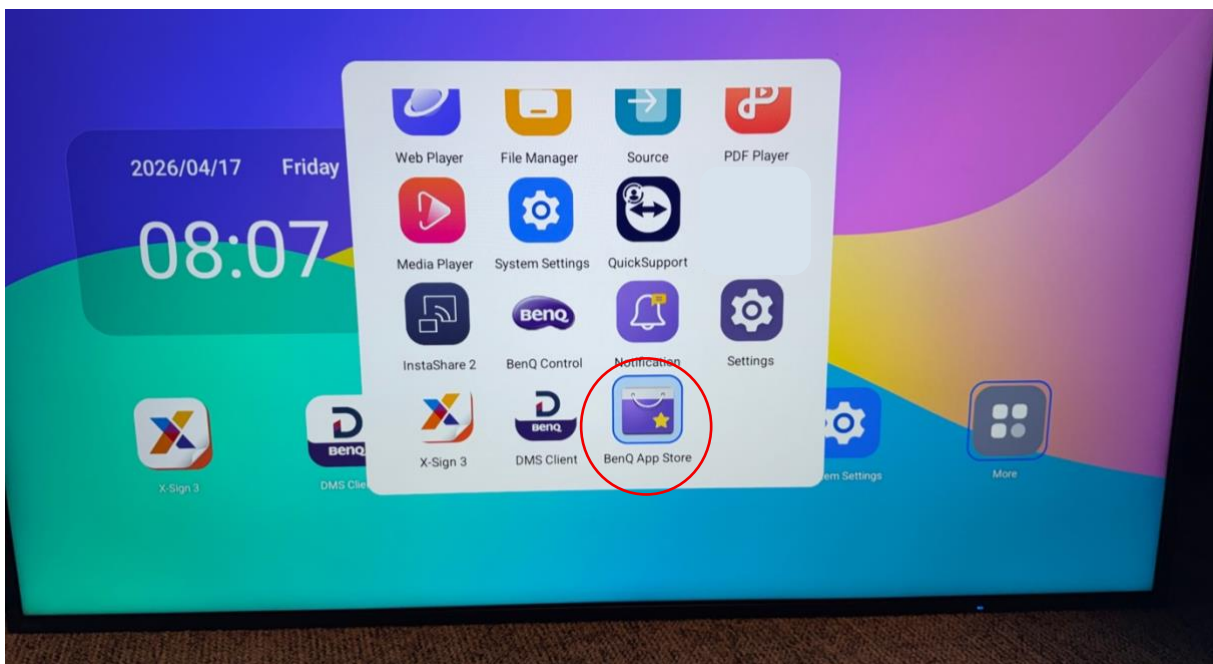


After finishing the first-time setup menu, the display will automatically restart.

## 2. Install the LoopSign player app

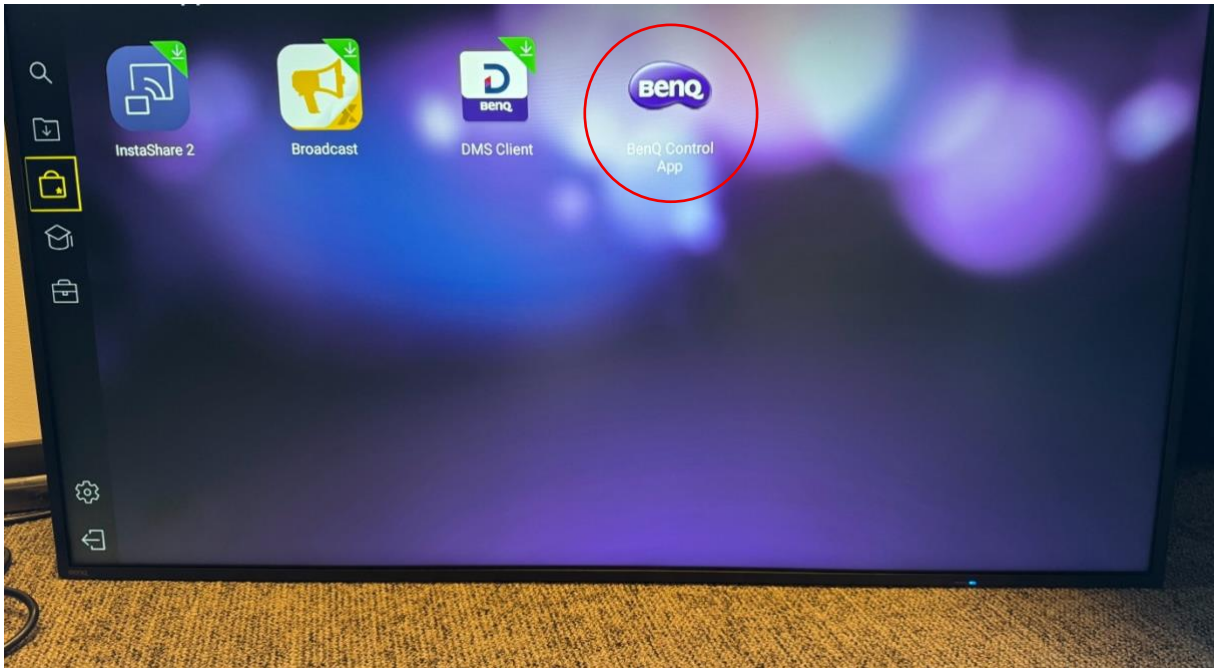
### 2.1 Open the BenQ App Store

From the Home screen of the display, click the “More”-icon and click on “BenQ App Store”



## 2.2 Install the BenQ Control app and the LoopSign Player app

Inside the BenQ App Store, click the first briefcase icon in the left-hand menu, and then click to install “BenQ Control App”.



Then click the second briefcase icon in the left-hand menu and click to install “LoopSign Player”.

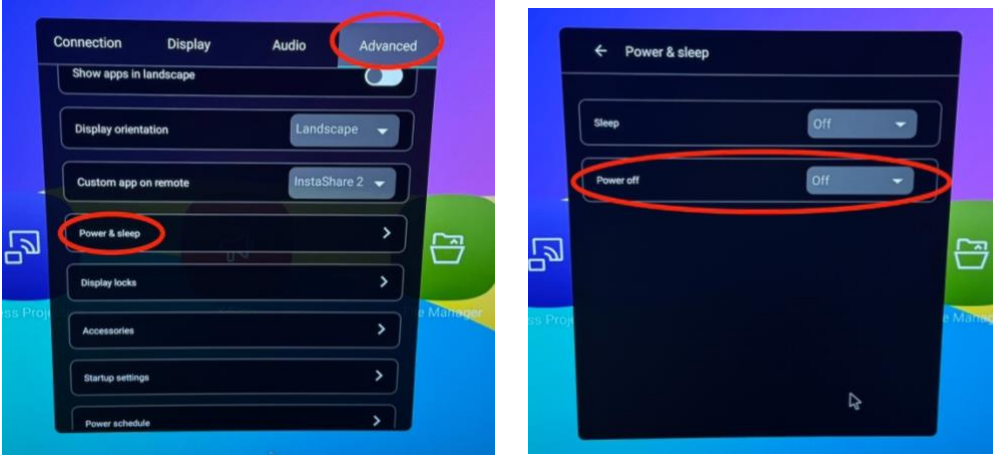


### 3. Configure display settings for power management and scheduling

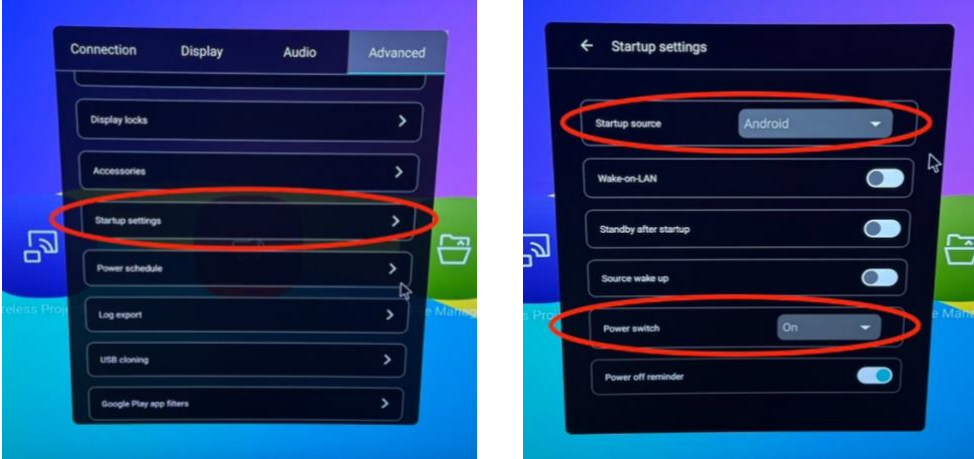
Go back to the Home screen and click the cog wheel to open the display's settings menu.



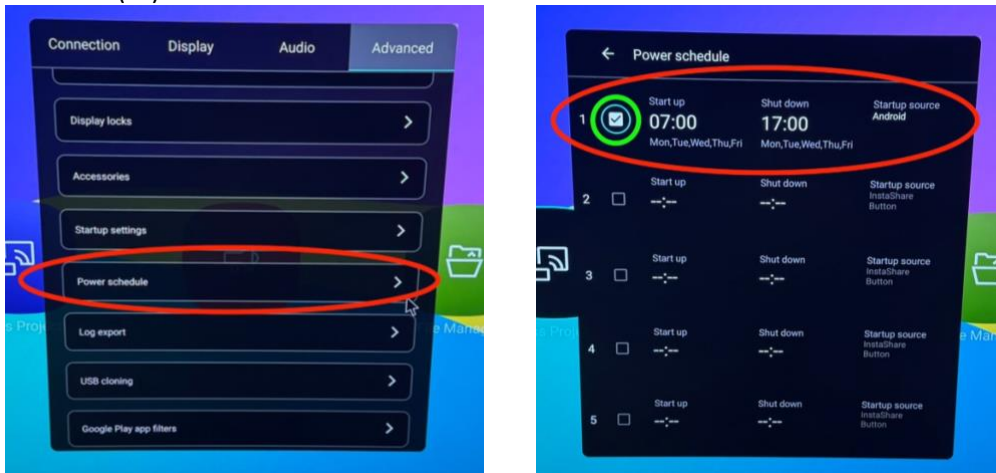
In the Advanced tab, open "Power & sleep" and set "Power off" to "Off".



Open "Startup settings" and set "Startup source" to "Android" and "Power switch" to "On".



Open “Power schedule” and set your preferred power management schedule(s) for when the display should automatically turn on and off. Remember to enable you schedule(s) by checking the checkbox(es) after the schedule details have been set.



#### 4. Open the LoopSign Player app

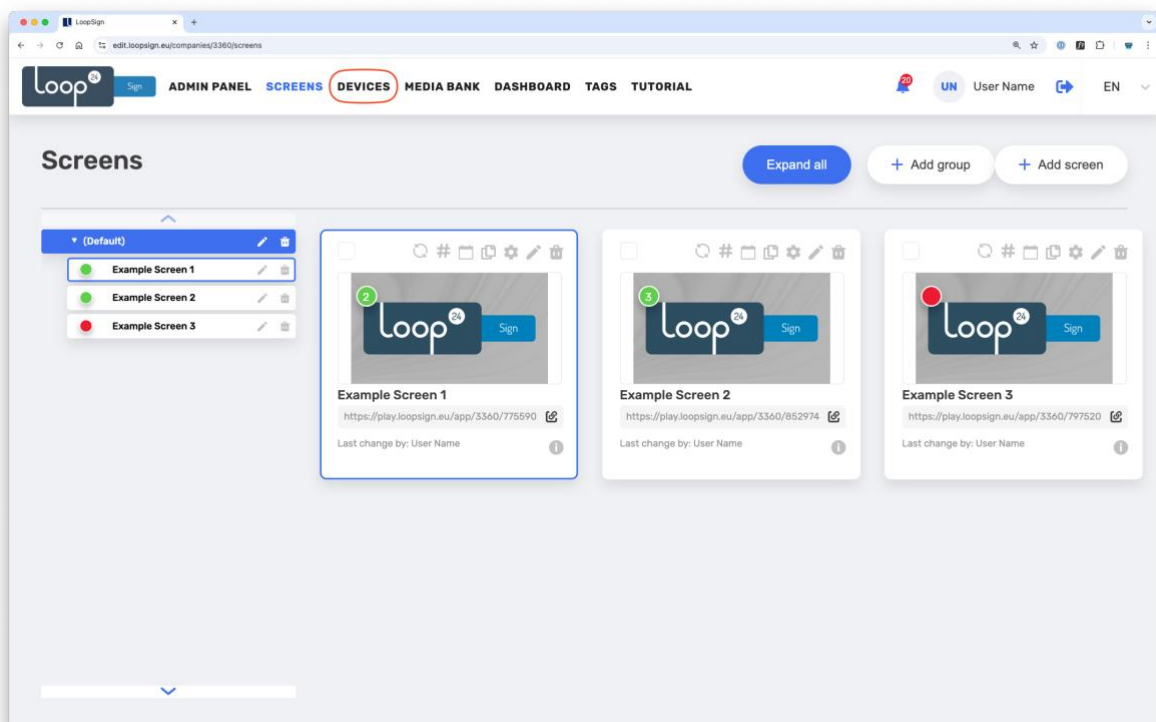
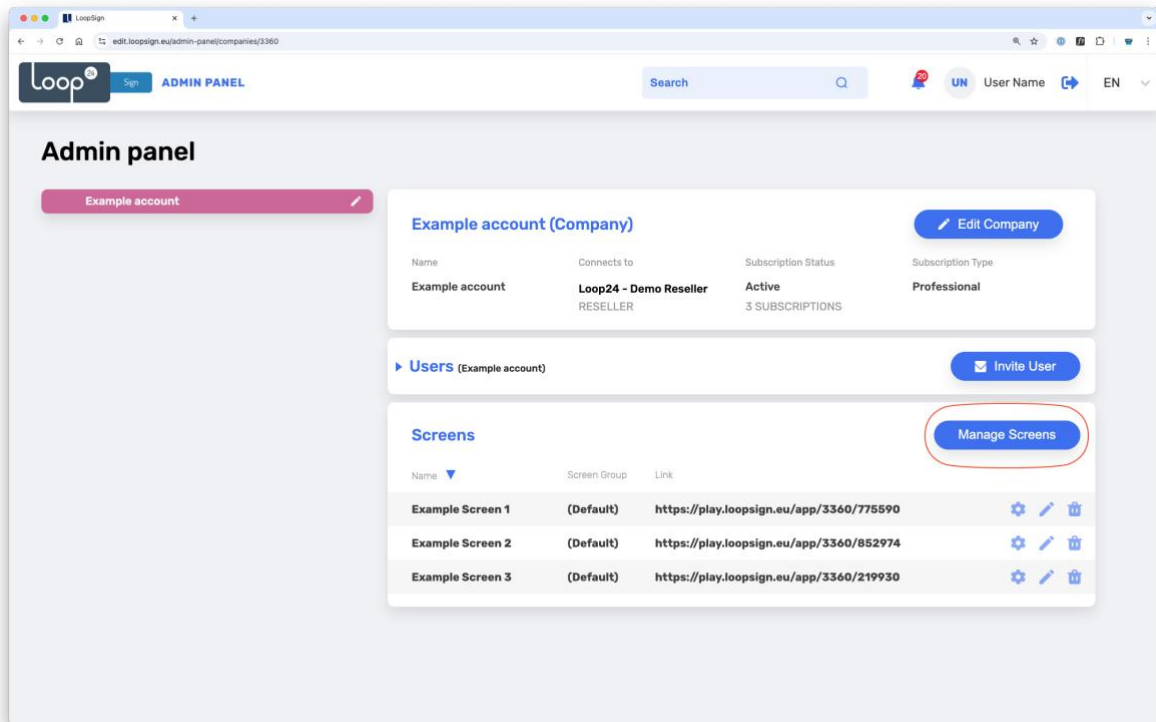
Both the BenQ Control app and LoopSign Player app needs to be launched manually once. After that, LoopSign Player will automatically launch every time the display boots. You’ll find the app in the apps tray in the Home screen. Use the unique hash code shown on the screen to enroll the display to your LoopSign account and show your content.

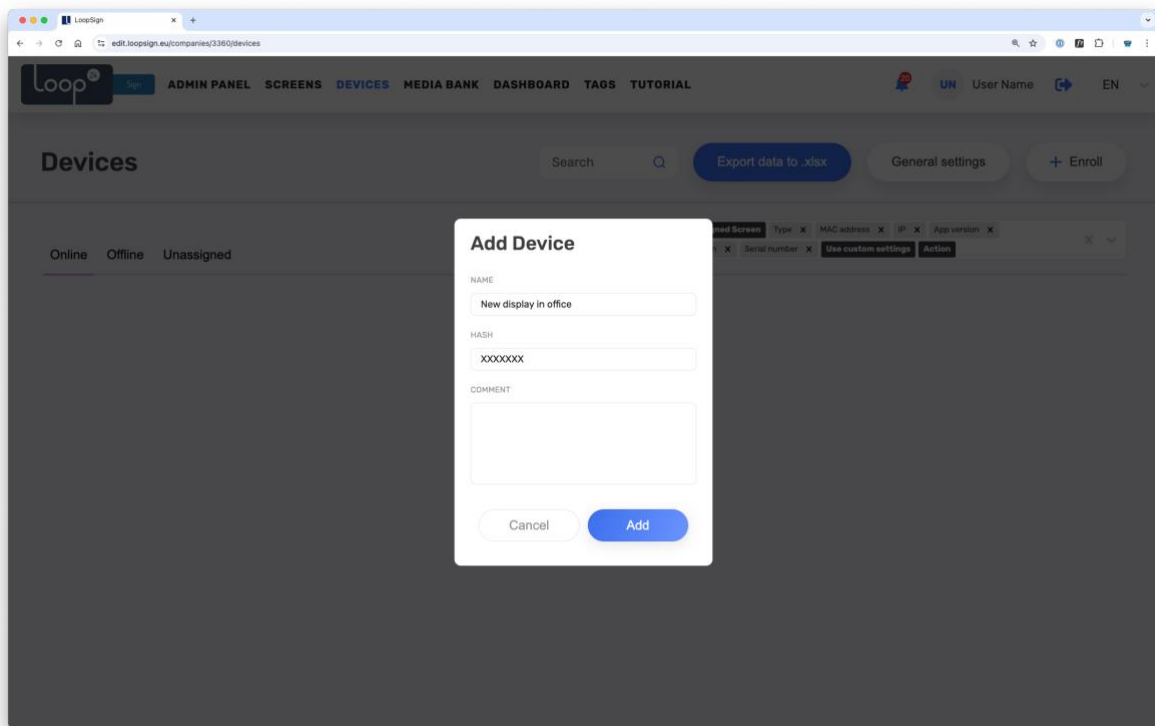
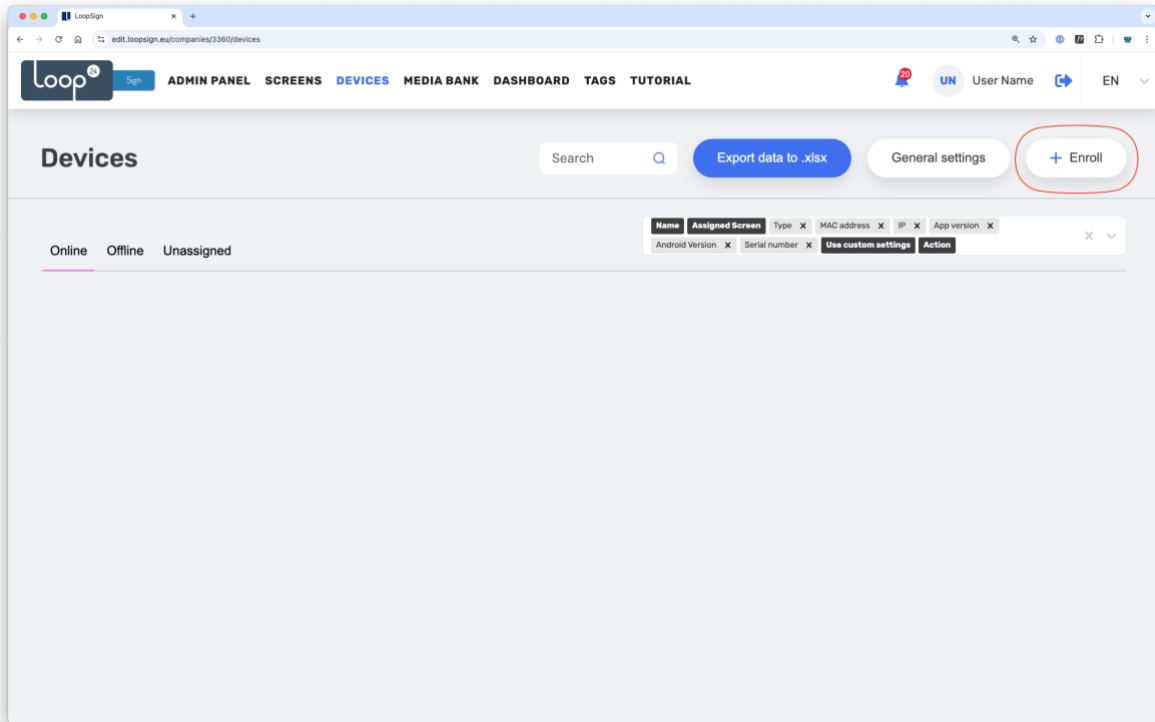


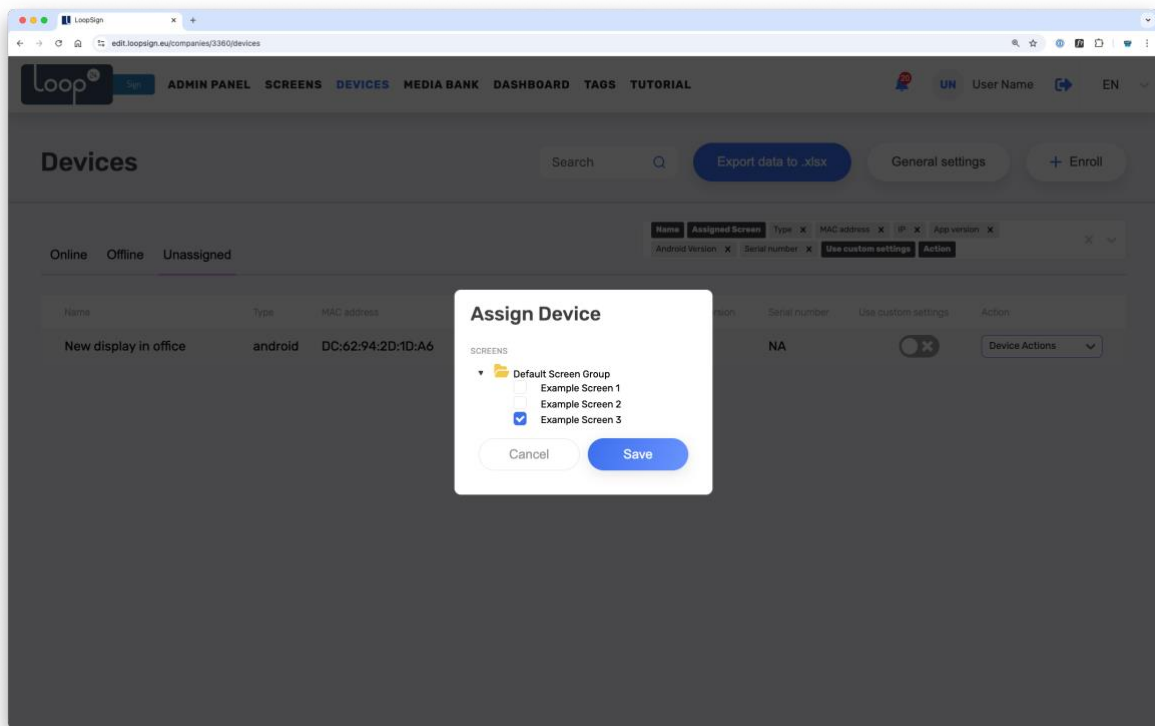
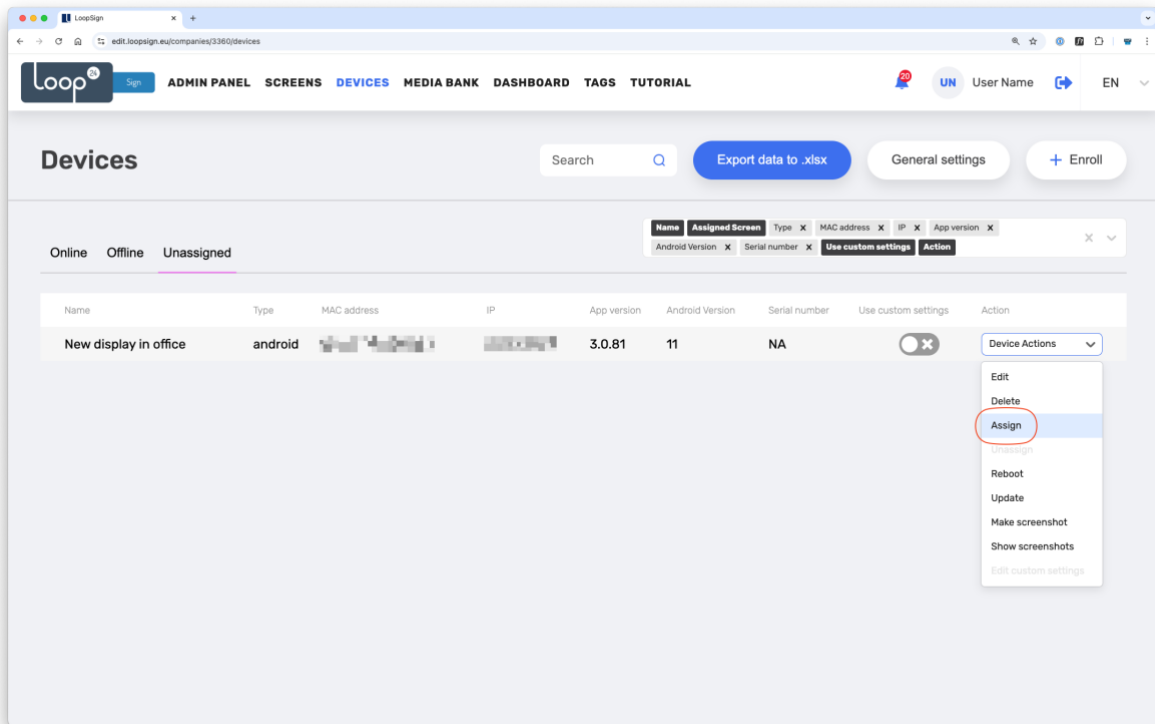
#### 5. Enroll the display on your LoopSign account

Log in to LoopSign, and then click *Manage Screens*. After that, click *Devices* in the top menu. In the *Devices* overview, click *+Enroll* to add the display to your LoopSign account, using the hash code

showing on the display. After that you can assign the display to a LoopSign screen to immediately have your display start playing your LoopSign content.







Congratulations! You've now successfully configured your display, enrolled it to your LoopSign account and assigned it to play content from a LoopSign screen.

